

An aerial photograph of a large dam and reservoir in a mountainous region of Cyprus. The dam is a long, concrete structure with a spillway on the right side. The reservoir is a large, blue-green body of water that fills a valley. The surrounding landscape is rugged and mountainous, with green vegetation and rocky terrain. The sky is clear and blue.

**Ministry of Agriculture, Natural Resources and Environment  
Water Development Department**

# **Dams of Cyprus**



**Ministry of Agriculture, Natural Resources and Environment  
Water Development Department**

# **Dams of Cyprus**

**Nicosia, 2009**

**Editorial and publishing committee:**

N. Christofides (*Telemetry Division*)

Dr K. Kyrou (*Construction Division*)

E. Pisti (*Telemetry Division*)

E. Ioannou (*Telemetry Division*)

M. Avgousti (*Construction Division*)

N. Xadjjianni (*Telemetry Division*)

**Photographs:**

Design Division

**Cover photograph:**

Arminou Dam

**Back cover photograph:**

Quickbird multispectral satellite image

Masari Dam

1st Published: December 2001

## Περιεχόμενα

|  |    |
|--|----|
| Introduction.....                      | 5  |
| Dams in Cyprus.....                    | 6  |
| <i>Operation and Maintenance</i> ..... | 9  |
| <i>Dam Safety</i> .....                | 11 |
| Dams of Cyprus (map).....              | 12 |
| Table Large Dams of Cyprus.....        | 14 |
| Table Small Dams of Cyprus.....        | 16 |
| Kouklia Dam.....                       | 18 |
| Lythrodontas (Lower) Dam.....          | 19 |
| Akrounta Dam.....                      | 20 |
| Galini Dam.....                        | 21 |
| Kalo Chorio (Klirou) Dam.....          | 22 |
| Petra (Lower) Dam.....                 | 23 |
| Petra (Upper) Dam.....                 | 24 |
| Lythrodontas (Upper) Dam.....          | 25 |
| Kafizes Dam.....                       | 26 |
| Agios Loukas Dam.....                  | 27 |
| Kantou Dam.....                        | 28 |
| Pera Pedi Dam.....                     | 29 |
| Pyrgos Dam.....                        | 30 |
| Trimiklini Dam.....                    | 31 |
| Agios Georgios Dam.....                | 32 |
| Athalassa Dam.....                     | 33 |
| Kioneli Dam.....                       | 34 |
| Lefka Dam.....                         | 35 |
| Morfou Dam.....                        | 36 |
| Panagia (Ammochostou) Dam.....         | 37 |
| Prodromos Reservoir Dam.....           | 38 |
| Agia Napa Dam.....                     | 39 |
| Kanlikiogiou Dam.....                  | 40 |
| Agros Dam.....                         | 41 |
| Argaka Dam.....                        | 42 |
| Kiti Dam (Tremithos).....              | 43 |
| Paralimni Lake Dam.....                | 44 |
| Liopetri Dam.....                      | 45 |
| Mia Milia Dam.....                     | 46 |
| Ovgos Dam.....                         | 47 |
| Agia Marina Dam.....                   | 48 |
| Polemida Dam.....                      | 49 |
| Kalopanagiotis Dam.....                | 50 |
| Makrasyka Dam.....                     | 51 |
| Mavrokolympos Dam.....                 | 52 |
| Pomos Dam.....                         | 53 |
| Agios Epiktitos Dam.....               | 54 |
| Akanthou Dam.....                      | 55 |
| Germasoyeia Dam.....                   | 56 |
| Sygkrasis Dam.....                     | 57 |
| Lefkara Dam.....                       | 58 |
| Masari Dam.....                        | 59 |
| Palaichori - Kampi Dam.....            | 60 |
| Kyperounta No 1 Dam.....               | 61 |
| Arakapas Dam.....                      | 62 |
| Lympia Dam.....                        | 63 |
| Agioi Vavatsinias No 1 Dam.....        | 64 |
| Eptagoneia No 1 Dam.....               | 65 |
| Melini No 1 Dam.....                   | 66 |

|                                     |     |
|-------------------------------------|-----|
| Pelendri Dam.....                   | 67  |
| Chandria Dam.....                   | 68  |
| Agioi Vavatsinias Dam.....          | 69  |
| Akapnou-Eptagoneia Dam.....         | 70  |
| Eptagoneia No 3 Dam.....            | 71  |
| Kato Mylos Dam.....                 | 72  |
| Arakapas No 1 Dam.....              | 73  |
| Asprokremmos Dam.....               | 74  |
| Eptagoneia No 2 Dam.....            | 75  |
| Xyliatos No 2 Dam.....              | 76  |
| Agridia Dam.....                    | 77  |
| Kyperounta No 2 Dam.....            | 78  |
| Lagoudera Dam.....                  | 79  |
| Ora Dam.....                        | 80  |
| Agioi Vavatsinias No 2 Dam.....     | 81  |
| Arakapas No 2 Dam.....              | 82  |
| Dierona Dam.....                    | 83  |
| Farmakas No 1 Dam.....              | 84  |
| Farmakas No 2 Dam.....              | 85  |
| Choirokoitia Dam.....               | 86  |
| Dipotamos Dam.....                  | 87  |
| Esso Galata Dam.....                | 88  |
| Kalavastos Dam.....                 | 89  |
| Evretou Dam.....                    | 90  |
| Aradippou Dam.....                  | 91  |
| Achna Dam.....                      | 92  |
| Kouris Dam.....                     | 93  |
| Vyzakia Dam.....                    | 94  |
| Melini No 2 Dam.....                | 95  |
| Odou No 1 Dam.....                  | 96  |
| Odou No 2 Dam.....                  | 97  |
| Arminou Dam.....                    | 98  |
| Tsakistra Dam.....                  | 99  |
| Tamassos Dam.....                   | 100 |
| Kannaviou Dam.....                  | 101 |
| Klirou-Malounta-Akaki Dam.....      | 102 |
| Small Dams without photographs..... | 103 |

## Introduction

*The building of dams is directly linked to the development and progress of nations and peoples. The first dams were constructed in the Middle East, where man first began to cultivate the earth and irrigate crops. The systematic construction of dams began in the early and middle Bronze Age (2500 –1600 BC). Archaeological findings testify to the fact that dams were constructed as early as six thousand years ago. The ruins of the Saad el Kafara dam near Cairo indicate that it was built in around 3000 BC. One of the best known dams of ancient times is the Ma'rib in the Yemen, which was built in 950 BC and was destroyed in an earthquake in 530 AD. Specific mention is made of this dam in the Koran.*



*The ancient Ma'rib dam*

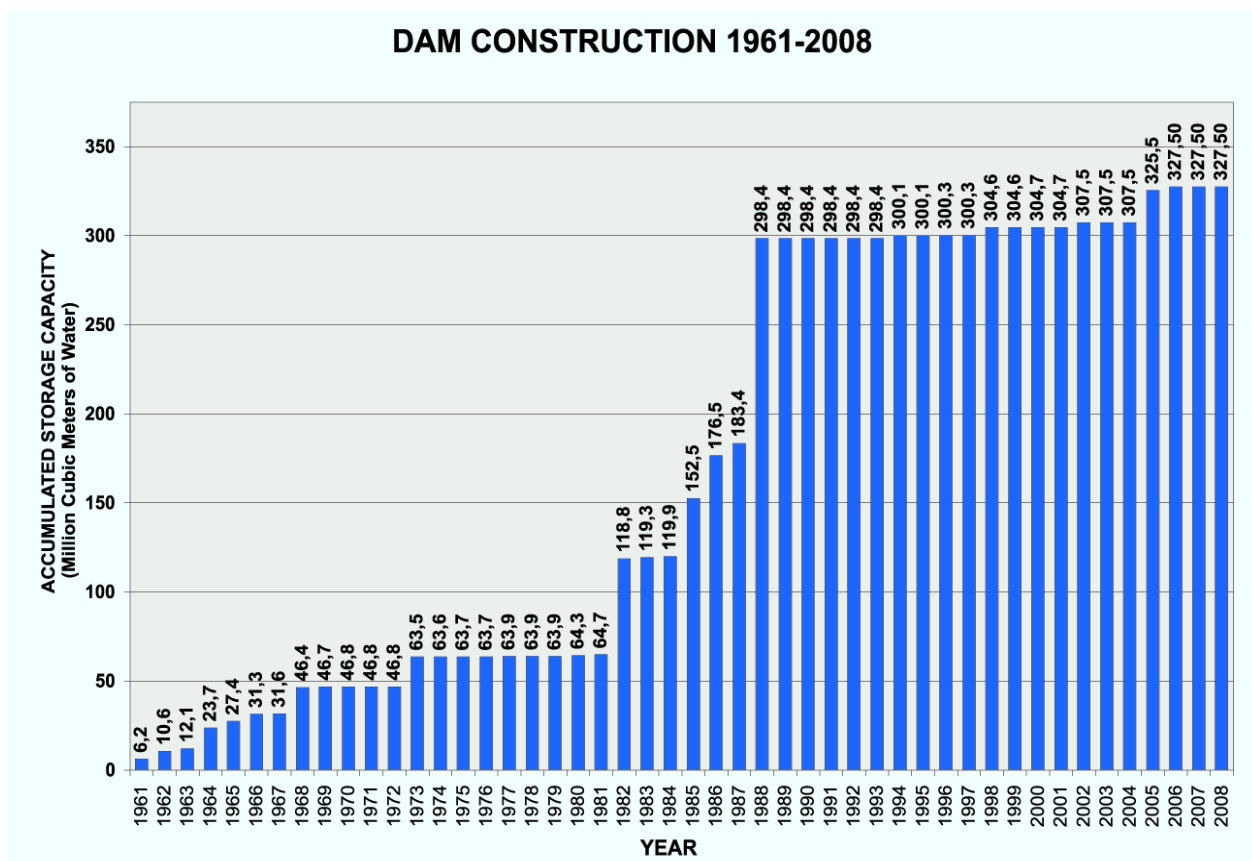
*A dam is a structure built in the bed of a natural river in order to impound the river's flow. The purpose is to store the water for irrigation, water supply, flood risks minimisation, recharging, formatting of artificial lakes, formation of navigable waterways, hydroelectric power generation etc. Most dams usually serve more than one purpose, and are therefore known as multi-purpose dams.*

*Nowadays enormous dams are built which can reach heights up to 300 m (e.g. the Nurek dam in Tajikistan). The importance of dams to the economy as well as their social role is paramount, and they are undisputed symbols of development and prosperity.*

*Many different types of dams are built and the choices of dam is determined following technical-economic and environmental studies. These include gravity dams (made of concrete or masonry), arch concrete dams, embankment dams, rock-fill dams, etc. There are numerous variations of the above, particularly in relation to the impermeable element of the dam (clay core, asphalt core, upstream concrete face, plastic membrane, etc).*

## Dams in Cyprus

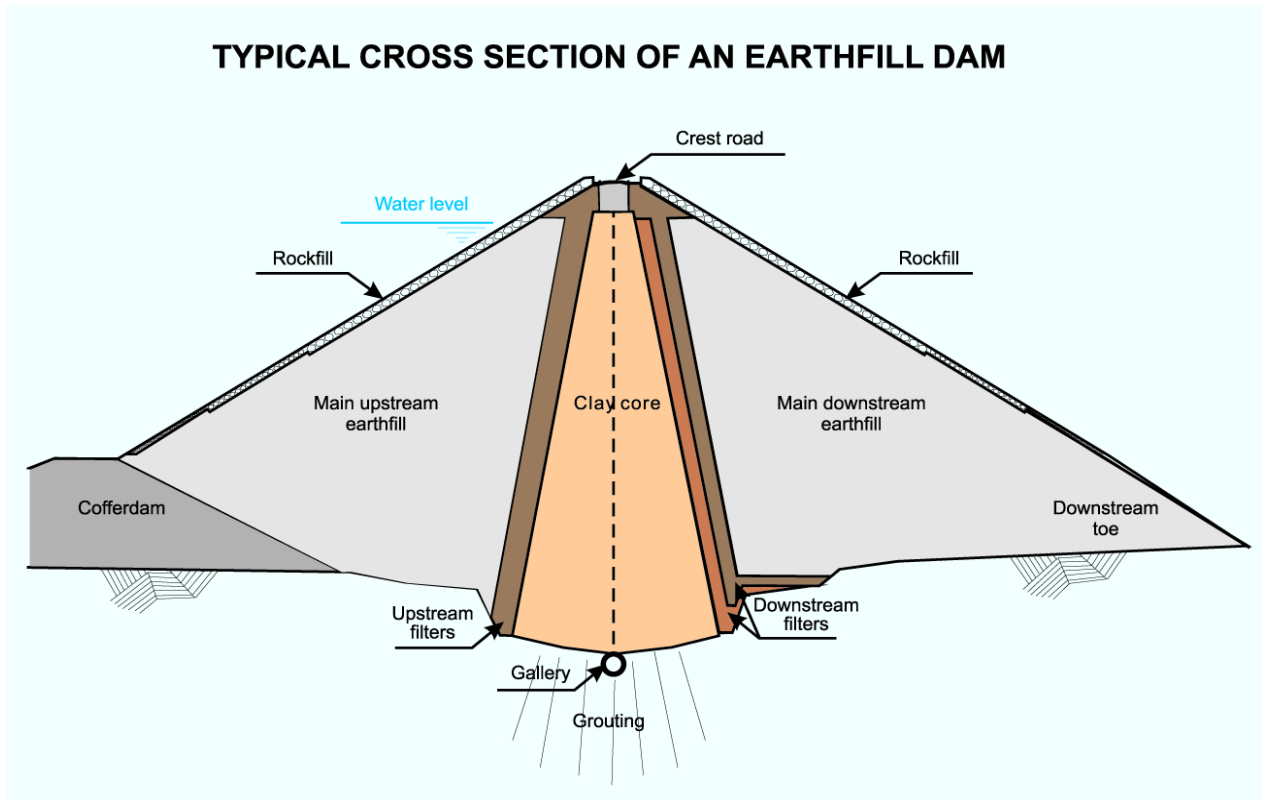
In Cyprus, the first dam - an earth-fill dam – was built at Kouklia in 1900, and during the period 1945-1958, 15 more dams were built – 13 gravity dams and 2 earth-fill dams. After the establishment of the Cyprus Republic, the Water Development Department (WDD) of the Ministry of Agriculture, Natural Resources and Environment began the construction of a large number of dams, most of which were of the earth-fill type. This type of dam was chosen for financial reasons but also because of the nature of the topography and geology of the region in which each dam was situated. The basic principle behind achieving the most cost-effective way to construct a dam is to use materials found in the vicinity to the site, and for almost all the major dams of Cyprus natural materials, such as clay, gravel etc were used.



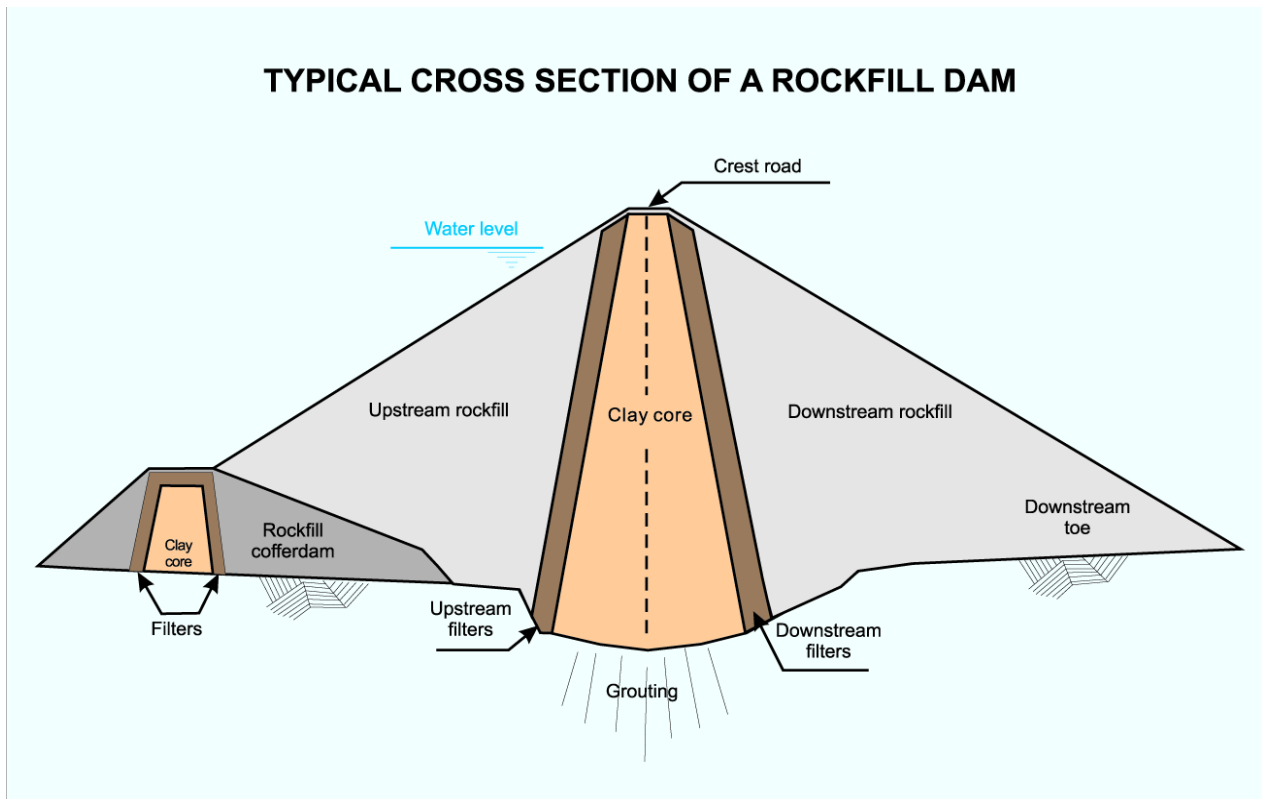
At present Cyprus has over 100 dams, 56 of which are included in the Register of the International Committee on Large Dams (ICOLD), of which Cyprus has been a member since 1969. Out of these large dams 18 are off-stream ponds. The total capacity of all the dams is approximately 327.5 million cubic metres of water. All the large and small dams of Cyprus, together with relevant details, appear on the table on pages 14-17.

The types of dams built in Cyprus belong mainly to 4 categories:

**Category 1 – Clay core earth-fill dam**



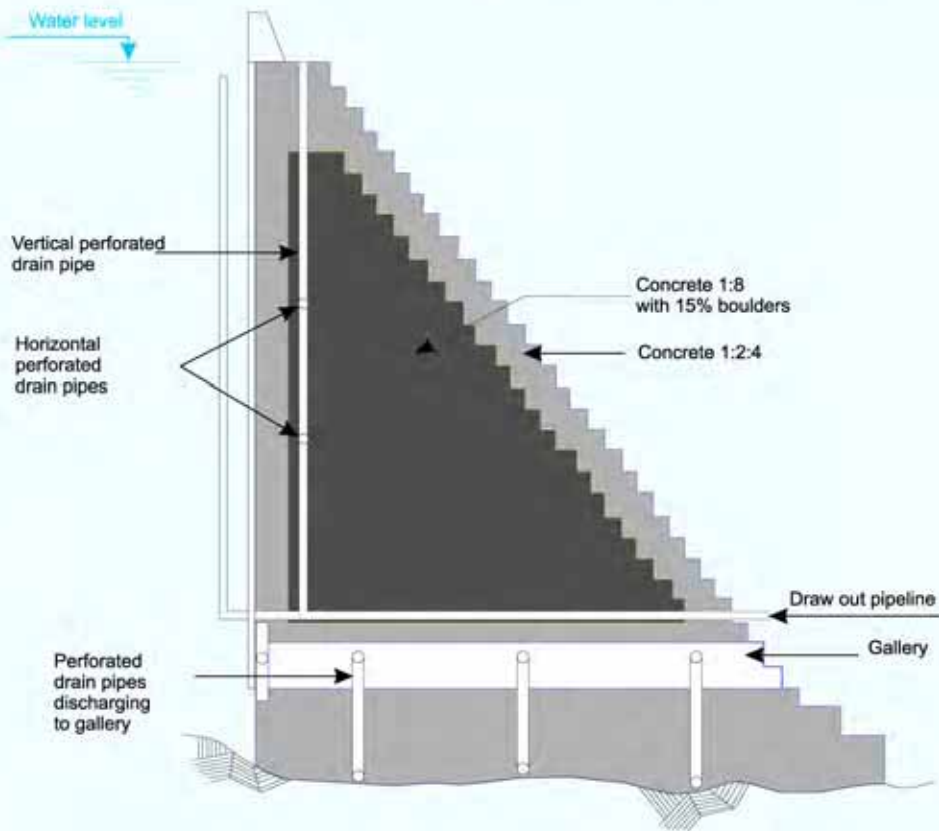
**Category 2 – Rock-fill clay core dam**





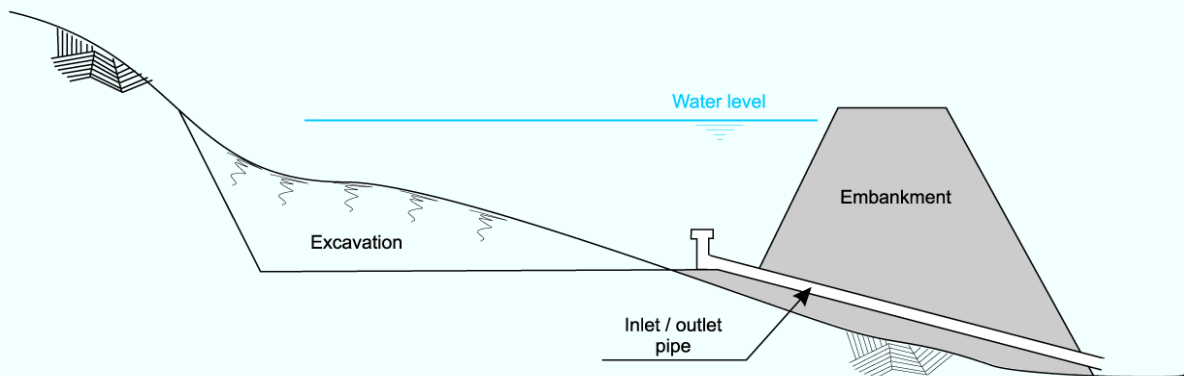
### Category 3 – Gravity concrete dams

#### TYPICAL CROSS SECTION OF A GRAVITY CONCRETE DAM



### Category 4 – Off-river reservoirs

#### TYPICAL CROSS SECTION OF AN OFF STREAM POND



A dam in which the latest technology was used, is Kannaviou dam. Although the dam has a rockfill body, the impermeable element consists of an upstream concrete deck made of reinforced concrete, for the construction of which new innovative techniques were employed.



*Kannaviou dam in operation*



*The upstream concrete face of Kannaviou dam constructed with the slipforming technique*

In Cyprus the dams are used mainly for water supply and irrigation. It is noted that there are no hydroelectric dams in Cyprus because there is very little hydroelectric potential for exploitation.

Despite the fact that the current water policy has introduced other, non-conventional methods, of water production, such as desalination of sea water and reuse of treated waste water, it is certain that dams will remain a conventional back-up source of potable water.

The figures below present the use of water from different sources over the past 18 years, showing clearly the important role of the dams. Moreover, taking into account the general objective of enhancing the water balance with recycled water, it is anticipated that in the future certain dams may be used as reservoirs for storage of recycled water after tertiary treatment.

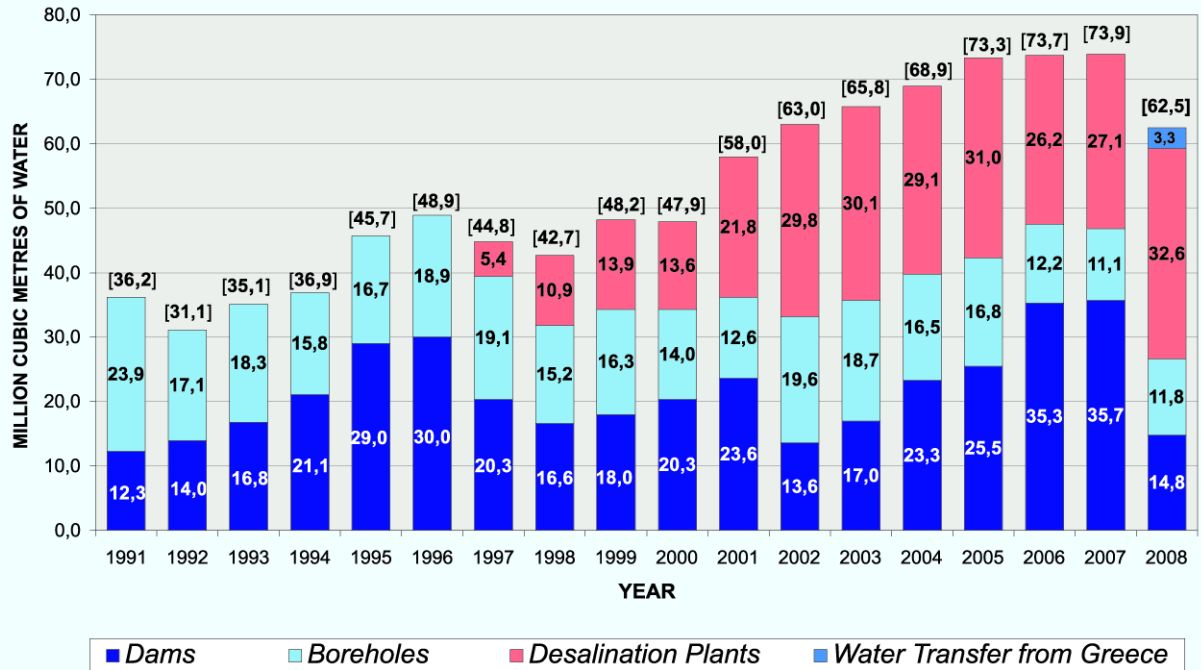
With the new water policy, on the basis of which water supply will no longer rely on the vagaries of the weather, it is expected that the dams will store significant quantities of water for use mainly for agriculture.

Apart from the fact that they have an important socio-economic role, the dams of Cyprus enrich the landscape environmentally by contributing to the development of natural ecosystems and thus to the sustainable development of the island.

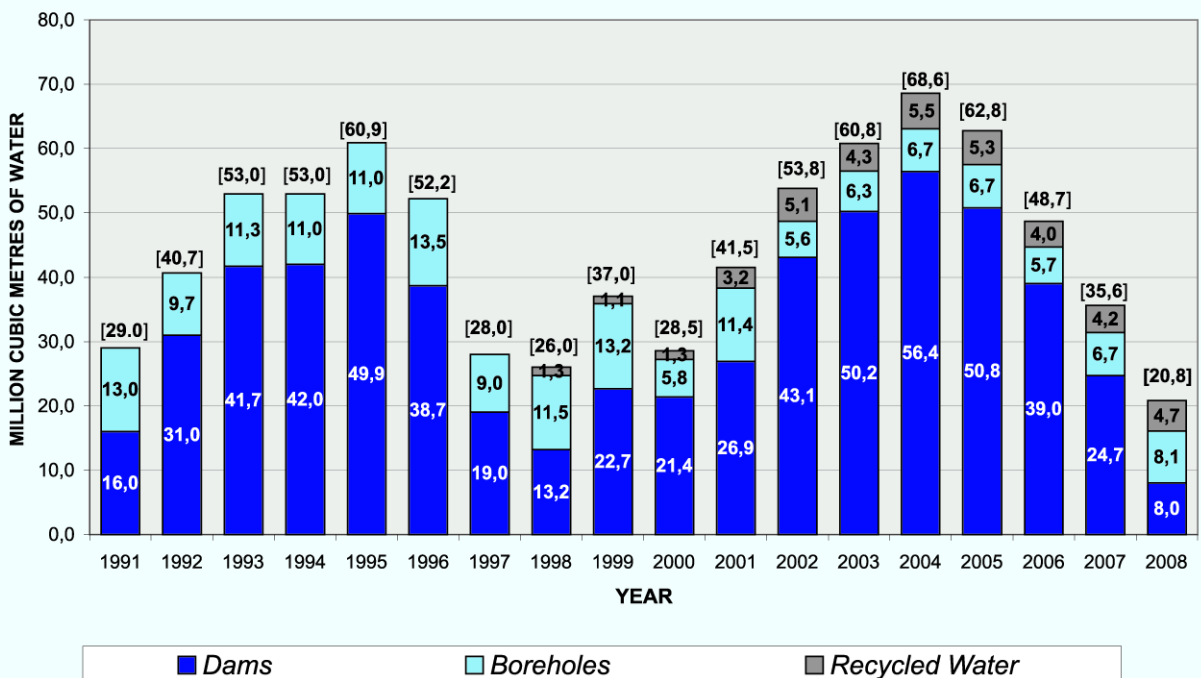
## Operation and Maintenance

Each dam, depending on its geographical position, is under the supervision of the corresponding District Office of the Water Development Department. The District Office is responsible for the maintenance of the dam according to the operation and maintenance manual and for ensuring that the dam is operating satisfactorily under safe conditions. The District Offices refer maintenance/repair problems relating to the electrical and mechanical equipment which they are not able to tackle themselves to the Department's central Electrical-Mechanical Division, which is appropriately staffed and possesses the necessary know-how to conduct/oversee the maintenance works. The largest dams employ permanent staff work under the supervision of a District Office Engineer.

## GOVERNMENT WATER WORKS - DOMESTIC SUPPLY SOURCES (1991 - 2008)



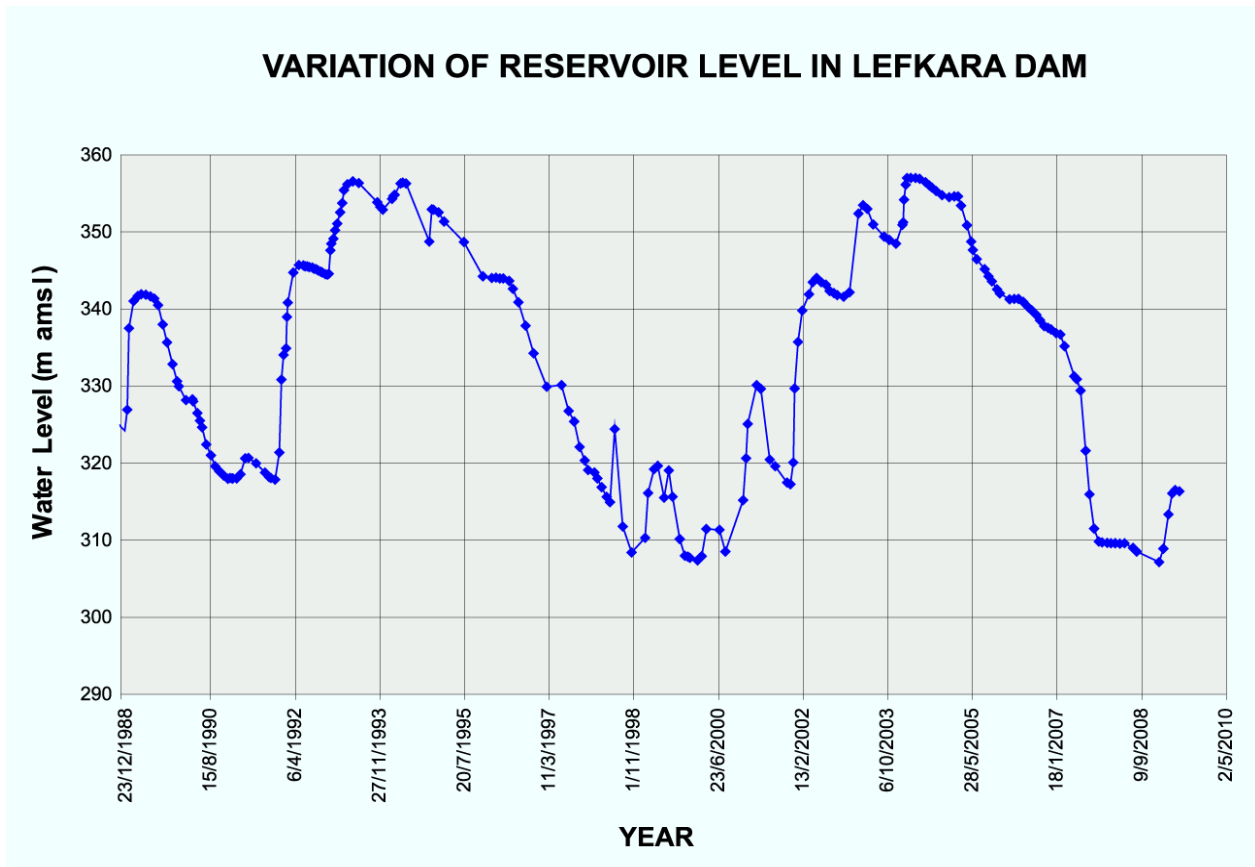
## GOVERNMENT WATER WORKS - IRRIGATION SUPPLY SOURCES (1991 - 2008)



The water levels in the reservoirs of the large dams as well as the inflow and outflow of water are monitored and recorded systematically and are available to the public on [www.moa.gov.cy/wdd](http://www.moa.gov.cy/wdd)

## Dam Safety

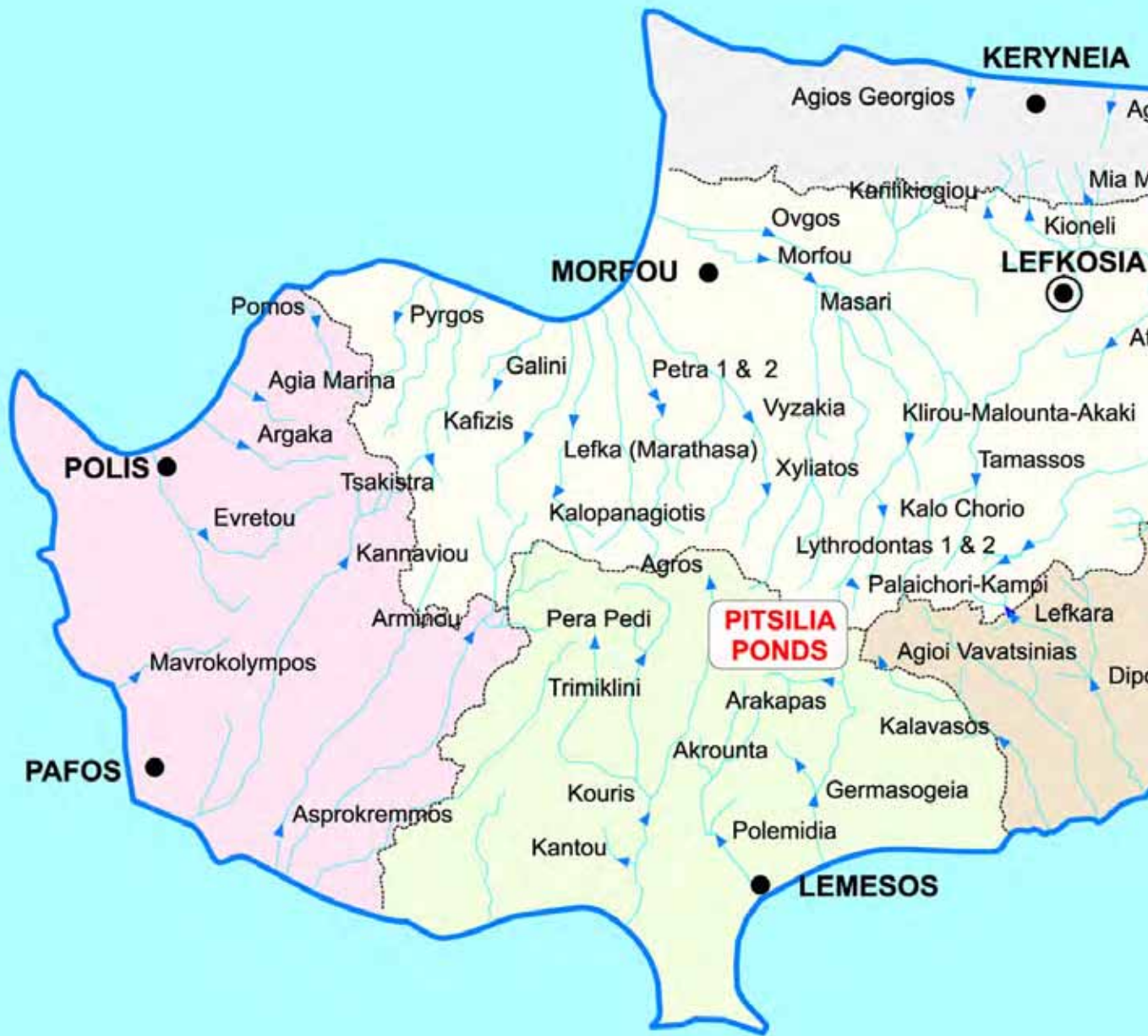
The safe operation of the dams is paramount important not only because the dams are of great economic importance for the island but also because most of them are situated upstream of large population areas, including large urban centres. A factor that characterises the large dams of Cyprus and affects their behaviour is the enormous variation of the water levels over time as well as the long periods during which the dams remain empty or almost empty.



In order to ensure the safe operation of the dams, the Water Development Department has, since 2002, been implementing a safety system which includes frequent inspections, systematic maintenance, and monitoring of instrumentation for the most important dams of Cyprus. Owing to the relatively young age of the dams of Cyprus, they usually incorporate instrumentation systems which are able to record both externally and internally, useful parameters for analysing this behaviour such as horizontal/vertical displacements, pore pressures, total stresses, etc. State of the art digital accelerographs have been installed in the largest dams of Cyprus.

The safety system is based on systematic maintenance, frequent inspections by the Inspecting Engineer who has been appointed by the Director, as well as inspections by an independent expert (this measure will be implemented in the future) monitoring and analysis of the instrumentation records and the taking of the necessary corrective measures if and when required.

# DAMS OF CYPRUS





| DAMS OF CYPRUS    |                        |                   |                         |                            |          |            |          |                    |                            |                            |          |                             |                             |          |             |  |
|-------------------|------------------------|-------------------|-------------------------|----------------------------|----------|------------|----------|--------------------|----------------------------|----------------------------|----------|-----------------------------|-----------------------------|----------|-------------|--|
| NO.               | NAME                   | YEAR OF OPERATION | RIVER                   | CAPACITY (m <sup>3</sup> ) | PURPOSE  |            |          | IRRIGATION AREA Ha | WATER-SHED Km <sup>2</sup> | EMBANKMENT CHARACTERISTICS |          |                             | RESERVOIR                   |          | DESIGNED BY | CONSTRUCTED BY   |
|                   |                        |                   |                         |                            | DOMESTIC | IRRIGATION | RECHARGE |                    |                            | HEIGHT m                   | LENGTH m | VOLUME 1 000 m <sup>3</sup> | SURFACE 1000 m <sup>2</sup> | LENGTH m |             |  |
| <b>LARGE DAMS</b> |                        |                   |                         |                            |          |            |          |                    |                            |                            |          |                             |                             |          |             |  |
| 1                 | Kafizes                | 1953              | Xeros (Morfou)          | 113.000                    | *        | *          | 103      | 38.50              | Gravity                    | 23                         | 26       | 3                           | 20                          | 19       | 53          | Water Development Department                                 |
| 2                 | Kantou                 | 1956              | Tabakhana (Kouris)      | 34.000                     | *        | *          | 75       | 7.50               | Gravity                    | 15                         | 53       | 3                           | 12                          | 31       | 59          | Water Development Department                                 |
| 3                 | Pera Pedi              | 1956              | Kiyos (Kouris)          | 55.000                     | *        | *          | 15       | 10.00              | Gravity                    | 22                         | 66       | 4                           | 12                          | 37       | 106         | Water Development Department                                 |
| 4                 | Pyrgos                 | 1957              | Katouris                | 285.000                    | *        | *          | 167      | 13.50              | Gravity                    | 22                         | 66       | 8                           | 30                          | 30       | 120         | Water Development Department                                 |
| 5                 | Trimiklini             | 1958              | Kouris                  | 340.000                    | *        | *          | 87       | 51.50              | Gravity                    | 33                         | 76       | 6                           | 23                          | 31       | 59          | Water Development Department                                 |
| 6                 | Athalassa              | 1962              | Kalogyros (Pediaios)    | 791.000                    | *        | *          | 42       | 34.00              | Earthfill                  | 18                         | 415      | 88                          | 230                         | 240      | 47          | Water Development Department                                 |
| 7                 | Kioneli                | 1962              | Amyros (Pediaios)       | 1,045.000                  | *        | *          | 114      | 26.00              | Earthfill                  | 15                         | 196      | 46                          | 278                         | 57       | 170         | Water Development Department                                 |
| 8                 | Lefka                  | 1962              | Setrachos (Marathasa)   | 368.000                    | *        | *          | 174      | 54.60              | Gravity                    | 35                         | 149      | 20                          | 45                          | 31       | 246         | Water Development Department                                 |
| 9                 | Morfou                 | 1962              | Serrachis               | 1,879.000                  | *        | *          | 903      | 458.00             | Earthfill                  | 13                         | 1,400    | 387                         | 480                         | 450      | 680         | Water Development Department                                 |
| 10                | Kaniklogiou            | 1963              | Chinar (Pediaios)       | 1,113.000                  | *        | *          | 536      | 33.00              | Earthfill                  | 19                         | 297      | 52                          | 390                         | 27       | 110         | Water Development Department                                 |
| 11                | Agros                  | 1964              | Limnatis                | 99.000                     | *        | *          | 40       | 0.50               | Earthfill                  | 26                         | 171      | 53                          | 15                          | 51       | 6           | Water Development Department                                 |
| 12                | Argaka                 | 1964              | Maounta                 | 990.000                    | *        | *          | 321      | 50.00              | Rockfill                   | 41                         | 137      | 134                         | 107                         | 146      | 280         | Howard Humphreys & Sons UK                                   |
| 13                | Kiti                   | 1964              | Tremithos               | 1,614.000                  | *        | *          | 664      | 130.00             | Earthfill                  | 22                         | 1,075    | 173                         | 360                         | 150      | 610         | Il Nuovo Castoro Italy                                       |
| 14                | Liopetri               | 1964              | Potamos                 | 340.000                    | *        | *          | -        | 37.00              | Earthfill                  | 18                         | 540      | 55                          | 74                          | 12       | 90          | Water Development Department                                 |
| 15                | Mia Mila               | 1964              | Simeas (Pediaios)       | 355.000                    | *        | *          | 174      | 6.80               | Earthfill                  | 22                         | 125      | 53                          | 68                          | 42       | 24          | Water Development Department                                 |
| 16                | Ovgos                  | 1964              | Ovgos                   | 845.000                    | *        | *          | 853      | 0.20               | Earthfill                  | 16                         | 720      | 147                         | 260                         | 264      | 780         | Water Development Department                                 |
| 17                | Agia Marina            | 1965              | Xeros                   | 298.000                    | *        | *          | 201      | 8.40               | Rockfill                   | 33                         | 116      | 61                          | 33                          | 26       | 160         | Mediteranean Constructors - G.P. Zachariades, Greece -Cyprus |
| 18                | Polemida               | 1965              | Garyllis                | 3,400.000                  | *        | *          | 1,938    | 75.60              | Earthfill                  | 45                         | 170      | 215                         | 110                         | 134      | 580         | Energoproject, Yugoslavia                                    |
| 19                | Kalopanagiotis         | 1966              | Setrachos (Marathasa)   | 363.000                    | *        | *          | 58       | 26.00              | Earthfill                  | 40                         | 137      | 156                         | 47                          | 78       | 204         | Howard Humphreys & Sons UK                                   |
| 20                | Mavrokolympos          | 1966              | Mavrokolympos           | 2,180.000                  | *        | *          | 449      | 37.80              | Earthfill                  | 45                         | 183      | 302                         | 175                         | 284      | 366         | Energoproject, Yugoslavia                                    |
| 21                | Pomos                  | 1966              | Leivadi                 | 860.000                    | *        | *          | 382      | 36.30              | Rockfill                   | 38                         | 168      | 150                         | 83                          | 129      | 280         | Energoproject, Yugoslavia                                    |
| 22                | Germasoyeia            | 1968              | Germasoyeia             | 13,500.000                 | *        | *          | 1,924    | 156.70             | Earthfill                  | 49                         | 294      | 525                         | 1,100                       | 115      | 850         | Energoproject, Yugoslavia                                    |
| 23                | Lefkara                | 1973              | Syriatis (Pentacholmos) | 13,850.000                 | *        | *          | 89       | 36.30              | Earth/Rockfill             | 71                         | 233      | 830                         | 650                         | 70       | 300         | Howard Humphreys & Sons UK                                   |
| 24                | Masari - (Recharge)    | 1973              | Serrachis               | 2,273.000                  | *        | *          | -        | 430.00             | Earthfill                  | 15                         | 1,000    | 278                         | 620                         | 110      | 560         | Water Development Department                                 |
| 25                | Palaichori - Kampi     | 1973              | Akaki (Serrachis)       | 620.000                    | *        | *          | 156      | 8.00               | Gravity                    | 33                         | 132      | 39                          | 110                         | 45       | 63          | Water Development Department                                 |
| 26                | Arakapas               | 1975              | Germasoyeia             | 129.000                    | *        | *          | 24       | 37.70              | Gravity                    | 23                         | 97       | 10                          | 20                          | 45       | 204         | Water Development Department                                 |
| 27                | Agioi Vavatsinias No 1 | 1980              | Off - stream            | 55.000                     | *        | *          | 11       | -                  | Earthfill                  | 17                         | -        | 32                          | 11                          | -        | -           | Water Development Department                                 |

|    |                        |      |                    |  |  |  |  |  |  |                |        |                |     |     |       |       |     |       |   |  |  |  |  |
|----|------------------------|------|--------------------|--|--|--|--|--|--|----------------|--------|----------------|-----|-----|-------|-------|-----|-------|---|--|--|--|--|
| 28 | Eptagonia No1          | 1980 | Off - stream       |  |  |  |  |  |  | 19             | 5,00   | Earthfill      | 16  | -   | 46    | 17    | -   | -     | Water Development Department                          | Iacovou Bros                                 |  |  |  |
| 29 | Melini No 1            | 1980 | Off - stream       |  |  |  |  |  |  | 12             | 6,5    | Earthfill      | 22  | -   | 32    | 13    | -   | -     | Water Development Department                          | Iacovou Bros                                 |  |  |  |
| 30 | Pelendri               | 1980 | Off - stream       |  |  |  |  |  |  | 50             | 2,00   | Earthfill      | 18  | -   | 59    | 21    | -   | -     | Water Development Department                          | Fysco Constructing Ltd                       |  |  |  |
| 31 | Chandria               | 1980 | Off - stream       |  |  |  |  |  |  | 13             | 0,8    | Earthfill      | 35  | -   | 41    | 14    | -   | -     | Water Development Department                          | Cybarco Ltd                                  |  |  |  |
| 32 | Agiol Vavatsinias      | 1981 | Vasilikos          |  |  |  |  |  |  | 11             | 8,60   | Arch           | 19  | 58  | 2     | 12    | -   | 63    | Water Development Department                          | Water Development Department                 |  |  |  |
| 33 | Akaprou - Eptagonia    | 1981 | Off - stream       |  |  |  |  |  |  | 22             | 19,6   | Earthfill      | 9   | -   | 67    | 33    | -   | -     | Water Development Department                          | Iacovou Brothers (Construction) Ltd          |  |  |  |
| 34 | Kato Mylos             | 1981 | Off - stream       |  |  |  |  |  |  | 23             | 6,2    | Earthfill      | 23  | -   | 41    | 20    | -   | -     | Water Development Department                          | Phoenic Construction Ltd                     |  |  |  |
| 35 | Asprokremmos           | 1982 | Xeros Potamos      |  |  |  |  |  |  | 5,088          | 227,00 | Earthfill      | 53  | 700 | 2,097 | 2,590 | 230 | 1,484 | Sir M. MacDonald & Partners                           | J & P and Medcon Construction Ltd., JV       |  |  |  |
| 36 | Xylliatis              | 1982 | Lagoudera (Elija)  |  |  |  |  |  |  | 308            | 19,20  | Rockfill       | 42  | 155 | 240   | 96    | 75  | 100   | Water Development Department                          | General Construction Co                      |  |  |  |
| 37 | Agridia                | 1983 | Off - stream       |  |  |  |  |  |  | 10             | 0,7    | Earthfill      | 18  | -   | 25    | 12    | -   | -     | Water Development Department                          | Iacovou Bros                                 |  |  |  |
| 38 | Kyperounta No 2        | 1983 | Off - stream       |  |  |  |  |  |  | 60             | 1,6    | Earthfill      | 27  | -   | 94    | 36    | -   | -     | Water Development Department                          | Iacovou Bros                                 |  |  |  |
| 39 | Lagoudera              | 1983 | Off - stream       |  |  |  |  |  |  | 16             | 5,7    | Earthfill      | 36  | -   | 63    | 14    | -   | -     | Water Development Department                          | Phoenic Construction Ltd Kykon               |  |  |  |
| 40 | Agiol Vavatsinias No 2 | 1984 | Off - stream       |  |  |  |  |  |  | 7              | -      | Earthfill      | 25  | -   | 30    | 9     | -   | -     | Water Development Department                          | Chr. Charalampous                            |  |  |  |
| 41 | Dierona                | 1984 | Off - stream       |  |  |  |  |  |  | 34             | 18,7   | Earthfill      | 24  | -   | 59    | 27    | -   | -     | Water Development Department                          | Char. Apostolides                            |  |  |  |
| 42 | Choirokoitia           | 1984 | Off - stream       |  |  |  |  |  |  | 39             | -      | Earthfill      | 16  | -   | 95    | 31    | -   | -     | Water Development Department                          | Iacovou Bros                                 |  |  |  |
| 43 | Dipolamos              | 1985 | Pentastochinos     |  |  |  |  |  |  | 320            | 79,00  | Rockfill       | 60  | 390 | 1,090 | 1,000 | 62  | 1,130 | Rofe Kennard & Lapworth in association Chr. Ioannides | Shephard Hill - GP Zachariades Joint Venture |  |  |  |
| 44 | Kalavasos              | 1985 | Vasilikos          |  |  |  |  |  |  | 765            | 95,50  | Rockfill       | 60  | 482 | 1,700 | 875   | 69  | 1,288 | Rofe Kennard & Lapworth in association Chr. Ioannides | J&P - Medcon                                 |  |  |  |
| 45 | Evretoi                | 1986 | Stavros tis Psokas |  |  |  |  |  |  | 3,300          | 91,00  | Rockfill       | 70  | 260 | 1,400 | 1,250 | 182 | 360   | Sir William Halcrow and Partners                      | Shephard Hill - Zachariades Joint Venture    |  |  |  |
| 46 | Achna                  | 1987 | Off - stream       |  |  |  |  |  |  | -              | -      | Earthfill      | 16  | 272 | 220   | 1,250 | -   | 35    | Sir William Halcrow                                   | Iacovou Bros                                 |  |  |  |
| 47 | Kouris                 | 1988 | Kouris             |  |  |  |  |  |  | -              | 308,00 | Earthfill      | 110 | 550 | 9,400 | 3,600 | 408 | 1,928 | Sogreah and Hydroconsult                              | Impregilo J&P                                |  |  |  |
| 48 | Vyzakia                | 1994 | Off - stream       |  |  |  |  |  |  | 350            | 350,00 | Earthfill      | 37  | 394 | 366   | 160   | 22  | 30    | Water Development Department                          | Cybarco, Ltd                                 |  |  |  |
| 49 | Melini No 2            | 1996 | Off - stream       |  |  |  |  |  |  | 14             | -      | Earthfill      | 36  | -   | 97    | 14    | -   | -     | Water Development Department                          | Charalambous Bros Ltd                        |  |  |  |
| 50 | Oudou No 1             | 1996 | Off - stream       |  |  |  |  |  |  | 12             | 2,9    | Earthfill      | 33  | -   | 46    | 9     | -   | -     | Water Development Department                          | Charalambous Bros Ltd                        |  |  |  |
| 51 | Oudou No 2             | 1996 | Off - stream       |  |  |  |  |  |  | 13             | 2,9    | Earthfill      | 34  | -   | 30    | 13    | -   | -     | Water Development Department                          | Charalambous Bros Ltd                        |  |  |  |
| 52 | Arminou                | 1998 | Dianizos           |  |  |  |  |  |  | 1,600<br>2,300 | 116,00 | Earth/Rockfill | 45  | 208 | 430   | 353   | 80  | 2,450 | Howard Humphreys & Sons England                       | GP Zachariades Ltd                           |  |  |  |
| 53 | Tsakistra              | 2000 | Limnitis           |  |  |  |  |  |  | 44             | 10,70  | Gravity        | 23  | 79  | 9     | 15    | 25  | 400   | Water Development Department                          | GP Zachariades Ltd                           |  |  |  |
| 54 | Tamassos               | 2002 | Pedialios          |  |  |  |  |  |  | -              | 45,00  | Earth/Rockfill | 34  | 200 | 260   | 305   | 68  | 800   | Mott MacDonald  | Char. Apostolides Ltd and Co.                |  |  |  |
| 55 | Kannaviou              | 2004 | Ezousa             |  |  |  |  |  |  | -              | 56,00  | Earth/Rockfill | 75  | 650 | 1,900 | 926   | 119 | 780   | Howard Humphreys & partners with J. Theophilou        | AEGEC-Iacovou Bros - Cybarco                 |  |  |  |
| 56 | Kilrou-Malounta-Akaki  | 2007 | Akaki (Serrachis)  |  |  |  |  |  |  | -              | 84,00  | Earth/Rockfill | 38  | 285 | 215   | 180   | 59  | 1,200 | Water Development Department                          | CYBARCO PLC                                  |  |  |  |
|    |                        |      |                    |  |  |  |  |  |  | TOTAL          |        | 310.514.000    |     |     |       |       |     |       |   |  |  |  |  |



**DAMS OF CYPRUS**

| NO.               | NAME                 | YEAR OF OPERATION | RIVER             | CAPACITY (m <sup>3</sup> ) | PURPOSE  |            | IRRIGATION AREA Ha | WATER-SHED Km <sup>2</sup> | EMBANKMENT CHARACTERISTICS |          |          |                             | RESERVOIR                   |          | DESIGNED BY                  | CONSTRUCTED BY               |                              |
|-------------------|----------------------|-------------------|-------------------|----------------------------|----------|------------|--------------------|----------------------------|----------------------------|----------|----------|-----------------------------|-----------------------------|----------|------------------------------|------------------------------|------------------------------|
|                   |                      |                   |                   |                            | DOMESTIC | IRRIGATION |                    |                            | RECHARGE                   | HEIGHT m | LENGTH m | VOLUME 1 000 m <sup>3</sup> | SURFACE 1000 m <sup>2</sup> | LENGTH m |                              |                              | CAPACITY m <sup>3</sup> /s   |
| <b>SMALL DAMS</b> |                      |                   |                   |                            |          |            |                    |                            |                            |          |          |                             |                             |          |                              |                              |                              |
| 1                 | Kouklia              | 1900              | -                 | 4,545,000                  |          | *          | -                  | -                          | Earthfill                  | 6        | -        | -                           | -                           | -        | Water Development Department | Water Development Department |                              |
| 2                 | Lythrodontas (Lower) | 1945              | Koutsos (Gialias) | 32,000                     | *        |            | 34                 | 8,70                       | Gravity                    | 11       | 42       | 3                           | 15                          | 34       | 70                           | Water Development Department | Water Development Department |
| 3                 | Akrounta             | 1947              | Germasoyeia       | 23,000                     | *        |            | 53                 | -                          | Gravity                    | 7        | -        | -                           | -                           | -        | -                            | Water Development Department | Water Development Department |
| 4                 | Gallini              | 1947              | Kampos            | 23,000                     | *        |            | 174                | 25,50                      | Gravity                    | 11       | 19       | 1                           | 5                           | 13       | 17                           | Water Development Department | Water Development Department |
| 5                 | Kalo Chorio (Klirou) | 1947              | Akaki (Serrachis) | 82,000                     | *        |            | 181                | 23,40                      | Gravity                    | 9        | 37       | 2                           | 13                          | 23       | 44                           | Water Development Department | Water Development Department |
| 6                 | Petra (Lower)        | 1948              | Alsas             | 32,000                     | *        |            | 362                | 37,10                      | Gravity                    | 9        | 36       | 2                           | 8                           | 21       | 32                           | Water Development Department | Water Development Department |
| 7                 | Petra (Upper)        | 1951              | Alsas             | 23,000                     | *        |            | 260                | 33,70                      | Gravity                    | 9        | 35       | 2                           | 4                           | 31       | 52                           | Water Development Department | Water Development Department |
| 8                 | Lythrodontas (Upper) | 1952              | Koutsos (Gialias) | 32,000                     | *        |            | 34                 | 3,00                       | Gravity                    | 10       | 21       | 2                           | 10                          | 19       | 13                           | Water Development Department | Water Development Department |
| 9                 | Agios Loukas         | 1955              | -                 | 455,000                    |          | *          | -                  | -                          | Earthfill                  | 3        | -        | -                           | -                           | -        | -                            | Water Development Department | Water Development Department |
| 10                | Gypsou               | 1955              | -                 | 100,000                    |          | *          | -                  | -                          | Earthfill                  | 3        | -        | -                           | -                           | -        | -                            | Water Development Department | Water Development Department |
| 11                | Agios Georgios       | 1962              | -                 | 90,000                     |          | *          | -                  | -                          | Earthfill                  | 6        | -        | -                           | -                           | -        | -                            | Water Development Department | Water Development Department |
| 12                | Panagia/Ammochostou  | 1962              | -                 | 45,000                     |          | *          | -                  | -                          | Earthfill                  | 7        | -        | -                           | -                           | -        | -                            | Water Development Department | Water Development Department |
| 13                | Prodomos Reservoir   | 1962              | Off - stream      | 122,000                    | *        |            | 23                 | -                          | Earthfill                  | 10       | -        | 74                          | 26                          | -        | -                            | Water Development Department | Water Development Department |
| 14                | Sotira               | 1962              | -                 | 45,000                     |          | *          | -                  | -                          | Earthfill                  | 8        | -        | -                           | -                           | -        | -                            | Water Development Department | Water Development Department |
| 15                | Agia Napa            | 1963              | -                 | 55,000                     |          | *          | -                  | -                          | Earthfill                  | 8        | -        | -                           | -                           | -        | -                            | Water Development Department | Water Development Department |
| 16                | Famagusta Recharge   | 1963              | -                 | 165,000                    |          | *          | -                  | -                          | Earthfill                  | 8        | -        | -                           | -                           | -        | -                            | Water Development Department | Water Development Department |
| 17                | Famagusta Antiflood  | 1963              | -                 | 50,000                     |          | *          | -                  | -                          | Earthfill                  | 5        | -        | -                           | -                           | -        | -                            | Water Development Department | Water Development Department |
| 18                | Paralimni            | 1963              | -                 | 115,000                    |          | *          | -                  | -                          | Earthfill                  | 5        | -        | -                           | -                           | -        | -                            | Water Development Department | Water Development Department |
| 19                | Agios Nikolaos       | 1964              | -                 | 1,365,000                  |          | *          | -                  | -                          | Earthfill                  | 2        | -        | -                           | -                           | -        | -                            | Water Development Department | Water Development Department |
| 20                | Deryneia             | 1964              | -                 | 23,000                     |          | *          | -                  | -                          | Earthfill                  | 6        | -        | -                           | -                           | -        | -                            | Water Development Department | Water Development Department |
| 21                | Agios Loukas Lake    | 1964              | -                 | 4,545,000                  |          | *          | -                  | -                          | Earthfill                  | 3        | -        | -                           | -                           | -        | -                            | Water Development Department | Water Development Department |
| 22                | Paralimni Lake       | 1964              | -                 | 1,365,000                  |          | *          | -                  | -                          | Earthfill                  | 1        | -        | -                           | -                           | -        | -                            | Water Development Department | Water Development Department |
| 23                | Frenaros             | 1964              | -                 | 115,000                    |          | *          | -                  | -                          | Earthfill                  | 5        | -        | -                           | -                           | -        | -                            | Water Development Department | Water Development Department |
| 24                | Avgorou              | 1966              | -                 | 68,000                     |          | *          | -                  | -                          | Earthfill                  | 3        | -        | -                           | -                           | -        | -                            | Water Development Department | Water Development Department |
| 25                | Kontea               | 1966              | -                 | 82,000                     |          | *          | -                  | -                          | Earthfill                  | 5        | -        | -                           | -                           | -        | -                            | Water Development Department | Water Development Department |
| 26                | Makrasyka            | 1966              | -                 | 195,000                    |          | *          | -                  | -                          | Earthfill                  | 8        | -        | -                           | -                           | -        | -                            | Water Development Department | Water Development Department |

|    |                 |      |              |           |   |   |       |           |    |     |    |     |    |             |   |   |
|----|-----------------|------|--------------|-----------|---|---|-------|-----------|----|-----|----|-----|----|-------------|---|---|
| 27 | Xylofiagou      | 1966 | -            | 86.000    | * | - | -     | Earthfill | 7  | -   | -  | -   | -  | -           | Water Development Department            | Water Development Department            |
| 28 | Sofira          | 1966 | -            | 32.000    | * | - | -     | Earthfill | 5  | -   | -  | -   | -  | -           | Water Development Department            | Water Development Department            |
| 29 | Frenaros        | 1966 | -            | 45.000    | * | - | -     | Earthfill | 7  | -   | -  | -   | -  | -           | Water Development Department            | Water Development Department            |
| 30 | Agios Georgios  | 1967 | -            | 68.000    | * | - | -     | Earthfill | 3  | -   | -  | -   | -  | -           | Water Development Department            | Water Development Department            |
| 31 | Achna Mesania   | 1967 | -            | 90.000    | * | - | -     | Earthfill | 4  | -   | -  | -   | -  | -           | Water Development Department            | Water Development Department            |
| 32 | Lysi            | 1967 | -            | 77.000    | * | - | -     | Earthfill | 7  | -   | -  | -   | -  | -           | Water Development Department            | Water Development Department            |
| 33 | Agios Epikitios | 1968 | -            | 34.000    | * | - | -     | Earthfill | 6  | -   | -  | -   | -  | -           | Water Development Department            | Water Development Department            |
| 34 | Akanthou        | 1968 | -            | 45.000    | * | - | -     | Earthfill | 6  | -   | -  | -   | -  | -           | Water Development Department            | Water Development Department            |
| 35 | Ormideia        | 1968 | -            | 100.000   | * | - | -     | Earthfill | 5  | -   | -  | -   | -  | -           | Water Development Department            | Water Development Department            |
| 36 | Sytkrasis       | 1968 | Merikeros    | 1.115.000 | * | - | 44,00 | Earthfill | 7  | 489 | 63 | 720 | 19 | 164         | Water Development Department            | Water Development Department            |
| 37 | Vrysoulles      | 1969 | -            | 140.000   | * | - | -     | Earthfill | 7  | -   | -  | -   | -  | -           | Water Development Department            | Water Development Department            |
| 38 | Morfou          | 1969 | -            | 130.000   | * | - | -     | Earthfill | 5  | -   | -  | -   | -  | -           | Water Development Department            | Water Development Department            |
| 39 | Xylolymvou      | 1969 | -            | 50.000    | * | - | -     | Earthfill | 7  | -   | -  | -   | -  | -           | Water Development Department            | Water Development Department            |
| 40 | Protopapas      | 1970 | -            | 90.000    | * | - | -     | Earthfill | 6  | -   | -  | -   | -  | -           | Water Development Department            | Water Development Department            |
| 41 | Kyperounta No 1 | 1974 | Off - stream | 50.000    | * | 8 | 1,00  | Earthfill | 7  | -   | -  | -   | -  | -           | Water Development Department            | Water Development Department            |
| 42 | Lympla          | 1977 | Tremithos    | 220.000   | * | - | 29,00 | Gravity   | 12 | 122 | 5  | 90  | 25 | 155         | Water Development Department            | Water Development Department            |
| 43 | Eptagoneia No 3 | 1981 | Off - stream | 65.000    | * | - | 3,9   | Earthfill | 12 | -   | 67 | 24  | -  | -           | Iacovou Bros                            | Iacovou Bros                            |
| 44 | Arakapas No 1   | 1982 | Off - stream | 192.000   | * | - | 4,6   | Earthfill | 12 | -   | 77 | 31  | -  | -           | Iacovou Bros                            | Iacovou Bros                            |
| 45 | Eptagoneia No 2 | 1982 | Off - stream | 127.000   | * | - | 3,9   | Earthfill | 8  | -   | 68 | 36  | -  | -           | Hadjiconstantis-Fysentides-Charalambous | Hadjiconstantis-Fysentides-Charalambous |
| 46 | Ora             | 1983 | Off - stream | 62.000    | * | - | 1,7   | Earthfill | 18 | -   | 34 | 13  | -  | -           | Phoenic Construction Ltd                | Phoenic Construction Ltd                |
| 47 | Arakapas No 2   | 1984 | Off - stream | 120.000   | * | - | 4,5   | Earthfill | 12 | -   | 44 | 27  | -  | -           | Char. Apostolides                       | Char. Apostolides                       |
| 48 | Farmakas No 1   | 1984 | Off - stream | 21.000    | * | - | -     | Earthfill | 18 | -   | 19 | 6   | -  | -           | Iacovou Bros                            | Iacovou Bros                            |
| 49 | Farmakas No 2   | 1984 | Off - stream | 61.000    | * | - | -     | Earthfill | 24 | -   | 47 | 12  | -  | -           | Iacovou Bros                            | Iacovou Bros                            |
| 50 | Esso Galata     | 1985 | Off - stream | 35.000    | * | - | -     | Earthfill | 27 | -   | -  | 8   | -  | -           | Water Development Department            | Water Development Department            |
| 51 | Aradippou       | 1987 | Parthenitis  | 90.000    | * | - | -     | Gravity   | 14 | -   | -  | -   | -  | -           | Water Development Department            | Water Development Department            |
|    |                 |      |              |           |   |   |       |           |    |     |    |     |    | TOTAL       | 16.937.000                              |   |
|    |                 |      |              |           |   |   |       |           |    |     |    |     |    | GRAND TOTAL | 327.451.000                             |   |

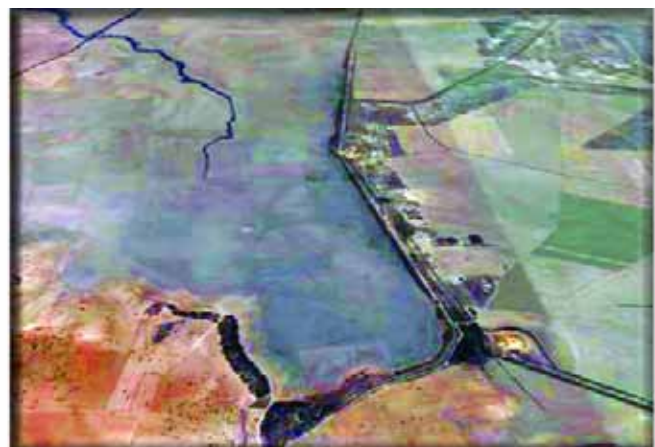
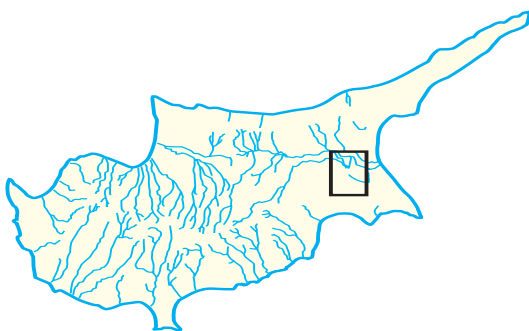
Note.

Large Dam: For the purpose of inclusion in the World Register of Dams, a large dam is defined as any dam above 15 metres in height (measured from the lowest point of foundation to top of dam) or any dam between 10 and 15 metres in height which meets at least one of the following conditions: a) the crest length is not less than 500 metres ; b) the capacity of the reservoir formed by the dam is not less than one million cubic metres ; c) the maximum flood discharge dealt with by the dam is not less than 2 000 cubic metres per second ; d) the dam had specially difficult foundation problems ; e) the dam is of unusual design.



|                    |           |                    |          |             |    |
|--------------------|-----------|--------------------|----------|-------------|----|
| Category:          | small dam | Purpose:           | recharge | Embankment: |    |
| River:             | -         | Reservoir surface: | -        | Height:     | 6m |
| Year of Operation: | 1900      | Water-Shed:        | -        | Length:     | -  |
| Type:              | earthfill |                    |          | Volume:     | -  |
|                    |           |                    |          | Spillway:   |    |
|                    |           |                    |          | Length:     | -  |
|                    |           |                    |          | Capacity:   | -  |

Designed by: *Water Development Department* Constructed by: *Water Development Department*



## Lythrodontas (Lower) Dam

32.000 m<sup>3</sup>



Category: small dam

River: Koutsos (Galias)

Year of Operation: 1945

Type: gravity

Purpose: irrigation

Reservoir surface: 15.000m<sup>2</sup>

Water-Shed: 8,70km<sup>2</sup>

Embankment:

Height: 11m

Length: 42m

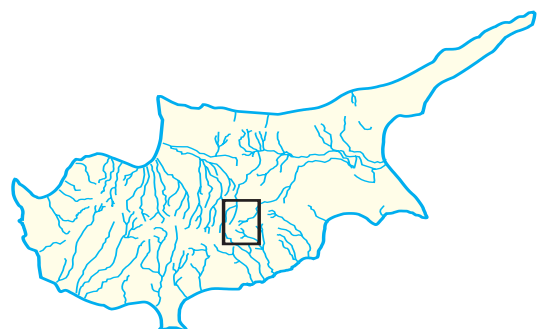
Volume: 3.000m<sup>3</sup>

Spillway:

Length: 34m

Capacity: 70m<sup>3</sup>/s

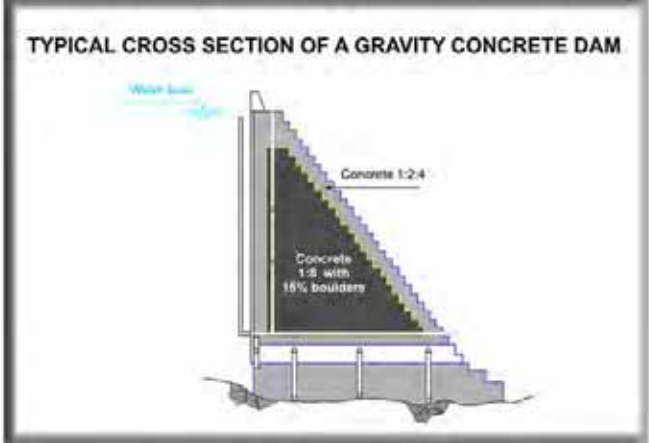
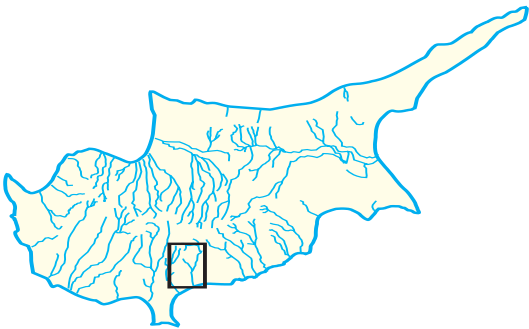
Designed by: *Water Development Department* Constructed by: *Water Development Department*





|                    |             |                    |             |             |    |
|--------------------|-------------|--------------------|-------------|-------------|----|
| Category:          | small dam   | Purpose:           | irrigations | Embankment: |    |
| River:             | Germasoyeia | Reservoir surface: | -           | Height:     | 7m |
| Year of Operation: | 1947        | Water-Shed:        | -           | Length:     | -  |
| Type:              | gravity     |                    |             | Volume:     | -  |
|                    |             |                    |             | Spillway:   |    |
|                    |             |                    |             | Length:     | -  |
|                    |             |                    |             | Capacity:   | -  |

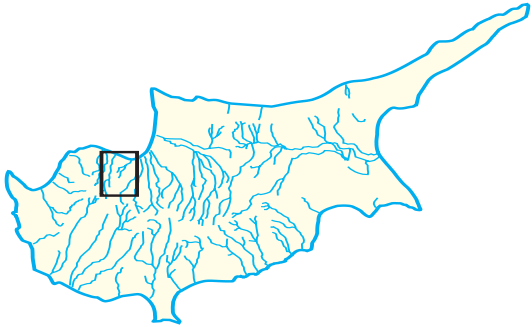
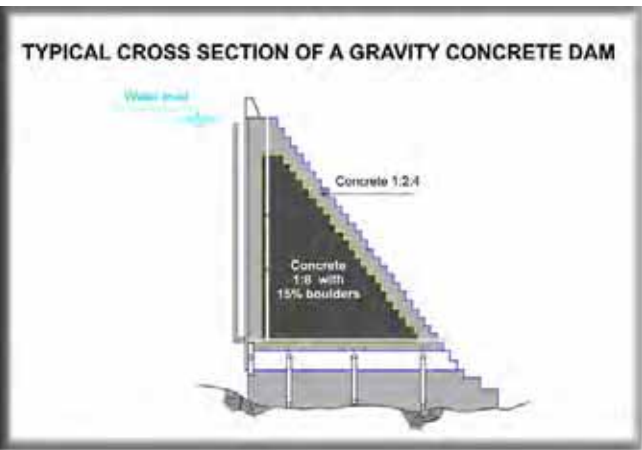
Designed by: *Water Development Department* Constructed by: *Water Development Department*





|                    |           |                    |                      |             |                     |
|--------------------|-----------|--------------------|----------------------|-------------|---------------------|
| Category:          | small dam | Purpose:           | irrigation           | Embankment: |                     |
| River:             | Kamos     | Reservoir surface: | 5.000m <sup>2</sup>  | Height:     | 11m                 |
| Year of Operation: | 1947      | Water-Shed:        | 25,50km <sup>2</sup> | Length:     | 19m                 |
| Type:              | gravity   |                    |                      | Volume:     | 1.000m <sup>3</sup> |
|                    |           |                    |                      | Spillway:   |                     |
|                    |           |                    |                      | Length:     | 13m                 |
|                    |           |                    |                      | Capacity:   | 17m <sup>3</sup> /s |

Designed by: *Water Development Department* Constructed by: *Water Development Department*



## Kalo Chorio (Klirou) Dam

82.000 m<sup>3</sup>



Category: small dam

Purpose: irrigation

Embankment:

River: Akaki (Serrachis)

Reservoir surface: 13.000m<sup>2</sup>

Height: 9m

Year of Operation: 1947

Water-Shed: 23,40km<sup>2</sup>

Length: 37m

Volume: 2.000m<sup>3</sup>

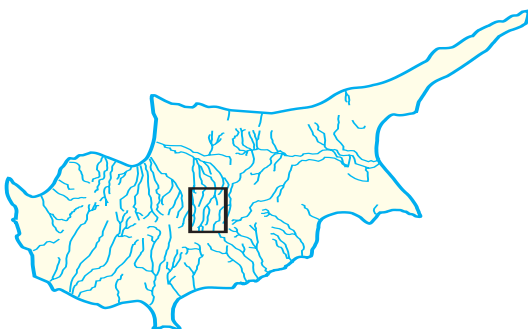
Type: gravity

Spillway:

Length: 23m

Capacity : 44m<sup>3</sup>/s

Designed by: *Water Development Department* Constructed by: *Water Development Department*



## Petra (Lower) Dam

32.000 m<sup>3</sup>



Category: small dam

Purpose: irrigation

Embankment:

River: Atsas

Reservoir surface: 8.000m<sup>2</sup>

Height: 9m

Year of Operation: 1948

Water-Shed: 37,10km<sup>2</sup>

Length: 36m

Volume: 2.000m<sup>3</sup>

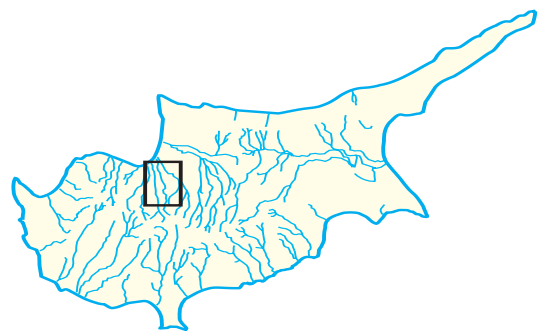
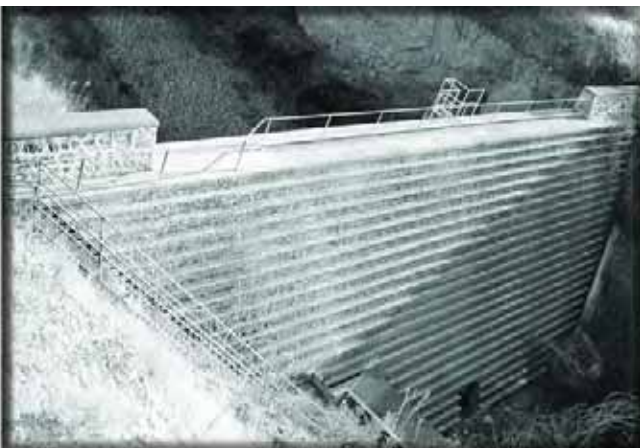
Type: gravity

Spillway:

Length: 21m

Capacity: 32m<sup>3</sup>/s

Designed by: *Water Development Department* Constructed by: *Water Development Department*





## Petra (Upper) Dam

23.000 m<sup>3</sup>



Category: small dam

River: Atsas

Year of Operation: 1951

Type: gravity

Purpose: irrigation

Reservoir surface: 4.000m<sup>2</sup>

Water-Shed: 33,70km<sup>2</sup>

Embankment:

Height: 9m

Length: 35m

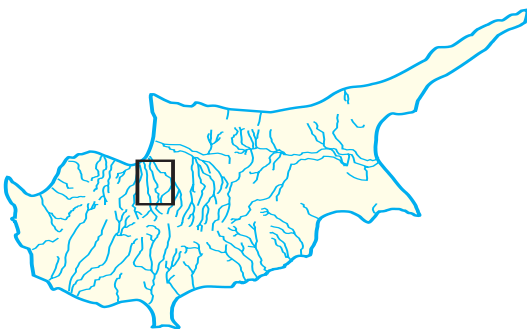
Volume: 2.000m<sup>3</sup>

Spillway:

Length: 31m

Capacity: 52m<sup>3</sup>/s

Designed by: *Water Development Department* Constructed by: *Water Development Department*



## Lythrodontas (Upper) Dam

32.000 m<sup>3</sup>



Category: small dam

Purpose: άρδευση

Embankment:

River: Koutsos (Galias)

Reservoir surface: 10.000m<sup>2</sup>

Height: 10m

Year of Operation: 1952

Water-shed: 3,00km<sup>2</sup>

Length: 21m

Volume: 2.000m<sup>3</sup>

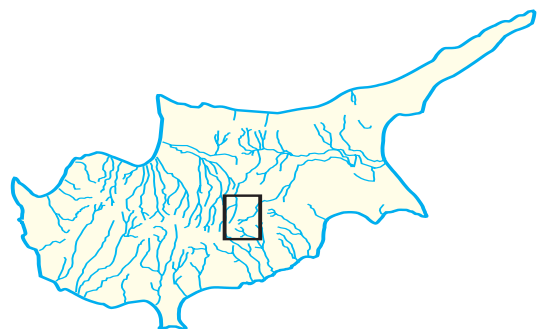
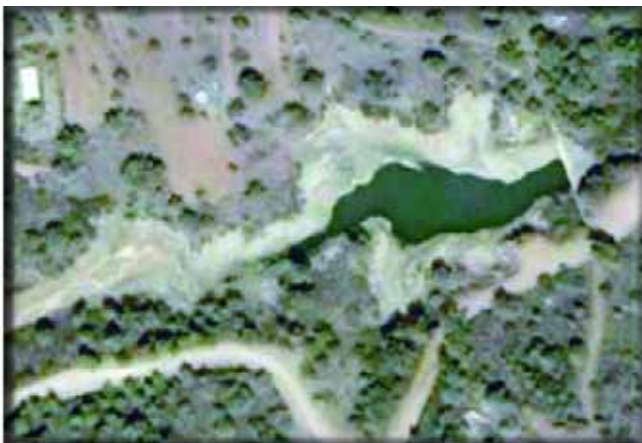
Type: gravity

Spillway:

Length: 19m

Capacity: 13m<sup>3</sup>/s

Designed by: *Water Development Department* Constructed by: *Water Development Department*



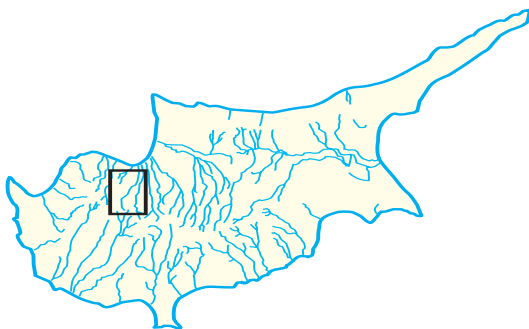
# Kafizes Dam

113.000 m<sup>3</sup>



|                    |                |                    |                      |             |                     |
|--------------------|----------------|--------------------|----------------------|-------------|---------------------|
| Category:          | large dam      | Purpose:           | irrigation           | Embankment: |                     |
| River:             | Xeros (Morfou) | Reservoir surface: | 20.000m <sup>2</sup> | Height:     | 23m                 |
| Year of Operation: | 1953           | Water-Shed:        | 38,50km <sup>2</sup> | Length:     | 26m                 |
| Type:              | gravity        |                    |                      | Volume:     | 3.000m <sup>3</sup> |
|                    |                |                    |                      | Spillway:   |                     |
|                    |                |                    |                      | Length:     | 19m                 |
|                    |                |                    |                      | Capacity:   | 53m <sup>3</sup> /s |

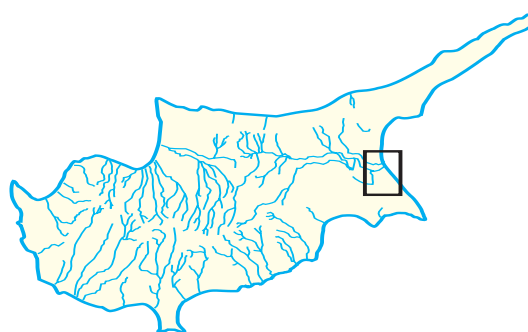
Designed by: *Water Development Department* Constructed by: *Water Development Department*





|                 |           |                    |          |             |    |
|-----------------|-----------|--------------------|----------|-------------|----|
| Category:       | small dam | Purpose:           | recharge | Embankment: |    |
| River:          | -         | Reservoir surface: | -        | Height:     | 3m |
| Year Operation: | 1955      | Water-Shed:        | -        | Length:     | -  |
| Type:           | earthfill |                    |          | Volume:     | -  |
|                 |           |                    |          | Spillway:   |    |
|                 |           |                    |          | Length:     | -  |
|                 |           |                    |          | Capacity:   | -  |

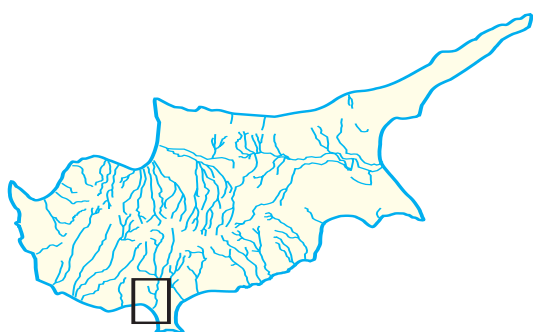
Designed by: *Water Development Department* Constructed by: *Water Development Department*





|                    |                    |                    |                      |             |                     |
|--------------------|--------------------|--------------------|----------------------|-------------|---------------------|
| Category:          | μεγάλο φράγμα      | Purpose:           | irrigation           | Embankment: |                     |
| River:             | Tabakhana (Kouris) | Reservoir surface: | 12.000m <sup>2</sup> | Height:     | 15m                 |
| Year of Operation: | 1956               | Water-Shed:        | 7,50km <sup>2</sup>  | Length:     | 53m                 |
| Type:              | gravity            |                    |                      | Volume:     | 3.000m <sup>3</sup> |
|                    |                    |                    |                      | Spillway:   |                     |
|                    |                    |                    |                      | Length:     | 31m                 |
|                    |                    |                    |                      | Capacity:   | 59m <sup>3</sup> /s |

Designed by: *Water Development Department* Constructed by: *Water Development Department*



## Pera Pedi Dam

55.000 m<sup>3</sup>



Category: large dam

River: Kryos (Kouris)

Year of Operation: 1956

Type: gravity

Purpose: irrigation

Reservoir surface: 12.000m<sup>2</sup>

Water-Shed: 10,00km<sup>2</sup>

Embankment:

Height: 22m

Length: 66m

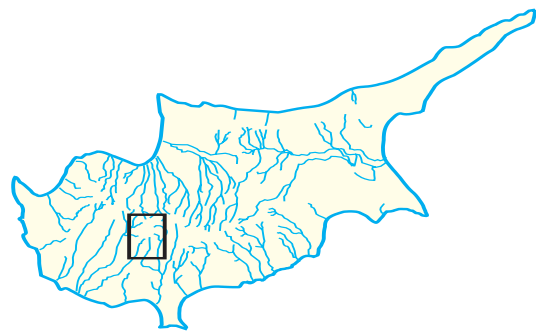
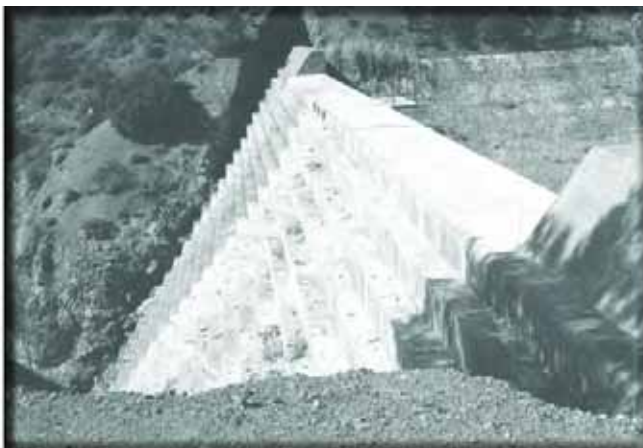
Volume: 4.000m<sup>3</sup>

Spillway:

Length: 37m

Capacity: 106m<sup>3</sup>/s

Designed by: *Water Development Department* Constructed by: *Water Development Department*



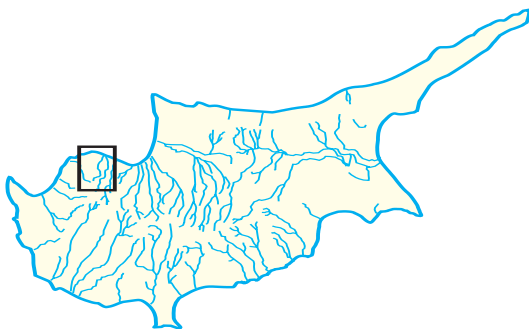
# Pyrgos Dam

285.000 m<sup>3</sup>



|                    |           |                    |                      |             |                      |
|--------------------|-----------|--------------------|----------------------|-------------|----------------------|
| Category:          | large dam | Purpose:           | irrigation           | Embankment: |                      |
| River:             | Katouris  | Reservoir surface: | 30.000m <sup>2</sup> | Height:     | 22m                  |
| Year of Operation: | 1957      | Water-Shed:        | 13,50km <sup>2</sup> | Length:     | 66m                  |
| Type:              | gravity   |                    |                      | Volume:     | 8.000m <sup>3</sup>  |
|                    |           |                    |                      | Spillway:   |                      |
|                    |           |                    |                      | Length:     | 30m                  |
|                    |           |                    |                      | Capacity:   | 120m <sup>3</sup> /s |

Designed by: *Water Development Department* Constructed by: *Water Development Department*



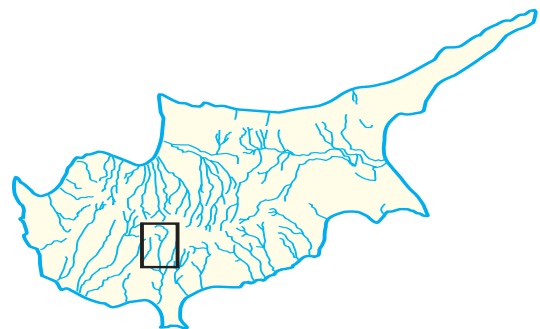
# Trimiklini Dam

340.000 m<sup>3</sup>



|                    |           |                    |                      |             |                     |
|--------------------|-----------|--------------------|----------------------|-------------|---------------------|
| Category:          | large dam | Purpose:           | irrigation           | Embankment: |                     |
| River:             | Kouris    | Reservoir surface: | 23.000m <sup>2</sup> | Height:     | 33m                 |
| Year of Operation: | 1958      | Water-Shed:        | 51,50km <sup>2</sup> | Length:     | 76m                 |
| Type:              | gravity   |                    |                      | Volume:     | 6.000m <sup>3</sup> |
|                    |           |                    |                      | Spillway:   |                     |
|                    |           |                    |                      | Length:     | 31m                 |
|                    |           |                    |                      | Capacity:   | 59m <sup>3</sup> /s |

Designed by: *Water Development Department* Constructed by: *Water Development Department*

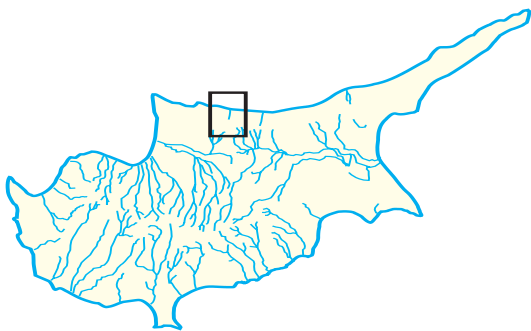






|                    |           |                    |          |             |    |
|--------------------|-----------|--------------------|----------|-------------|----|
| Category:          | small dam | Purpose:           | recharge | Embankment: |    |
| River:             | -         | Reservoir surface: | -        | Height:     | 6m |
| Year of Operation: | 1962      | Water-Shed:        | -        | Length:     | -  |
| Type:              | earthfill |                    |          | Volume:     | -  |
|                    |           |                    |          | Spillway:   | -  |
|                    |           |                    |          | Length:     | -  |
|                    |           |                    |          | Capacity:   | -  |

Designed by: *Water Development Department* Constructed by: *Water Development Department*



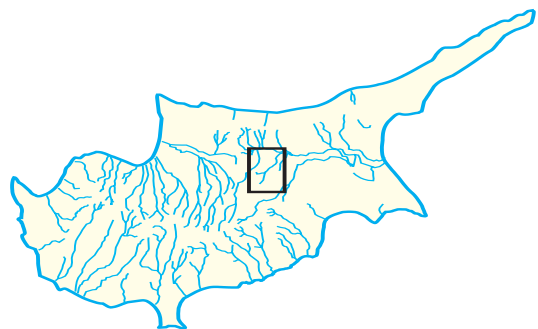
# Athalassa Dam

791.000 m<sup>3</sup>



|                    |                      |                    |                       |             |                      |
|--------------------|----------------------|--------------------|-----------------------|-------------|----------------------|
| Category:          | large dam            | Purpose:           | irrigation            | Embankment: |                      |
| River:             | Kalogyros (Pediaios) | Reservoir surface: | 230.000m <sup>2</sup> | Height:     | 18m                  |
| Year of Operation: | 1962                 | Water-Shed:        | 34,00km <sup>2</sup>  | Length:     | 415m                 |
| Type:              | Earthfill            |                    |                       | Volume:     | 88.000m <sup>3</sup> |
|                    |                      |                    |                       | Spillway:   |                      |
|                    |                      |                    |                       | Length:     | 240m                 |
|                    |                      |                    |                       | Capacity:   | 47m <sup>3</sup> /s  |

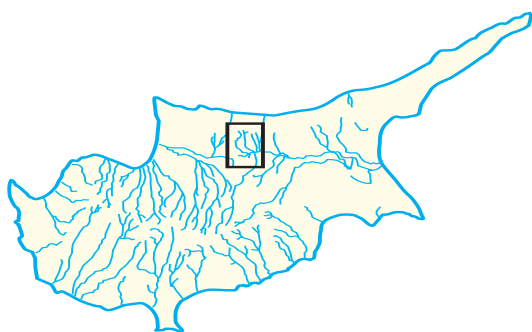
Designed by: *Water Development Department* Constructed by: *Water Development Department*





|                    |                    |                    |                       |             |                      |
|--------------------|--------------------|--------------------|-----------------------|-------------|----------------------|
| Category:          | large dam          | Purpose:           | irrigation            | Embankment: |                      |
| River:             | Armyros (Pediaios) | Reservoir surface: | 276.000m <sup>2</sup> | Height:     | 15m                  |
| Year of Operation: | 1962               | Water-Shed:        | 26,00km <sup>2</sup>  | Length:     | 196m                 |
| Type:              | earthfill          |                    |                       | Volume:     | 46.000m <sup>3</sup> |
|                    |                    |                    |                       | Spillway:   |                      |
|                    |                    |                    |                       | Length:     | 57m                  |
|                    |                    |                    |                       | Capacity:   | 170m <sup>3</sup> /s |

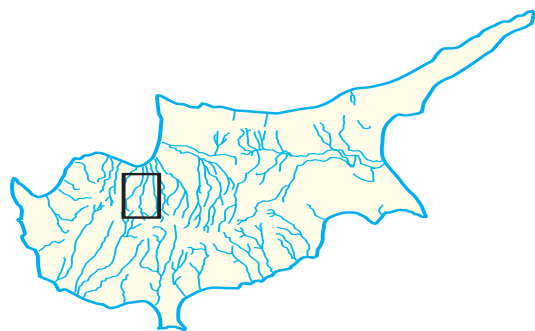
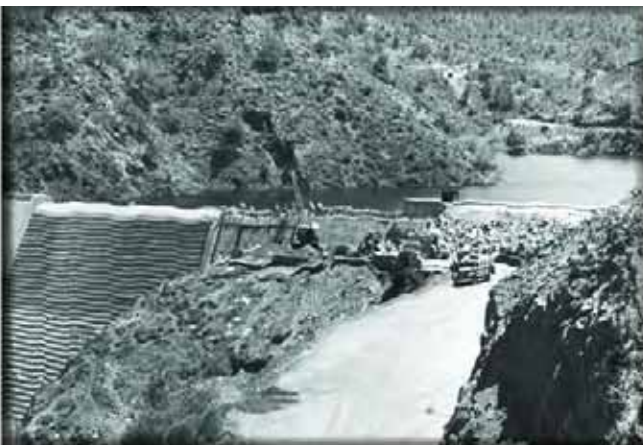
Designed by: *Water Development Department* Constructed by: *Water Development Department*





|                    |                       |                    |                      |             |                      |
|--------------------|-----------------------|--------------------|----------------------|-------------|----------------------|
| Category:          | large dam             | Purpose:           | irrigation           | Embankment: |                      |
| River:             | Setrachos (Marathasa) | Reservoir surface: | 45.000m <sup>2</sup> | Height:     | 35m                  |
| Year of Operation: | 1962                  | Water-Shed:        | 54,60km <sup>2</sup> | Length:     | 149m                 |
| Type:              | gravity               |                    |                      | Volume:     | 20.000m <sup>3</sup> |
|                    |                       |                    |                      | Spillway:   |                      |
|                    |                       |                    |                      | Length:     | 31m                  |
|                    |                       |                    |                      | Capacity:   | 246m <sup>3</sup> /s |

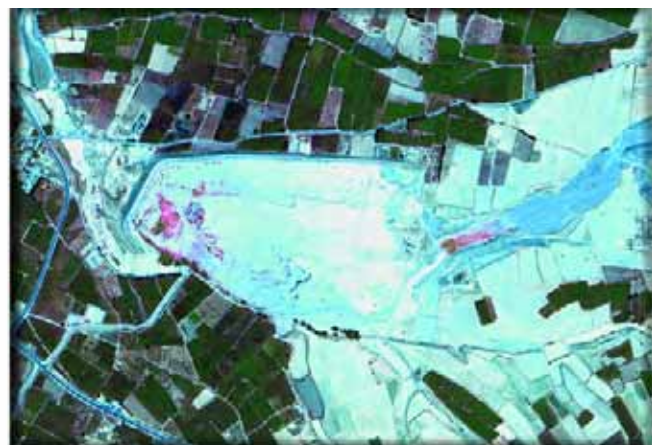
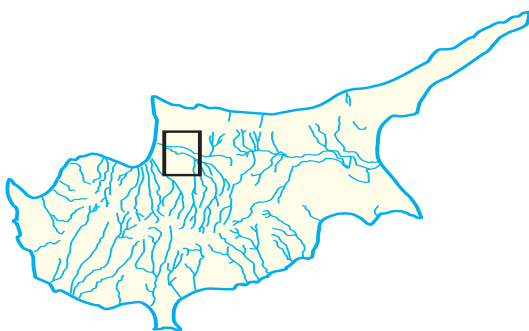
Designed by: *Water Development Department* Constructed by: *Water Development Department*





|                    |           |                    |                       |             |                       |
|--------------------|-----------|--------------------|-----------------------|-------------|-----------------------|
| Category:          | large dam | Purpose:           | irrigation, recharge  | Embankment: |                       |
| River:             | Serrachis | Reservoir surface: | 480.000m <sup>2</sup> | Height:     | 13m                   |
| Year of Operation: | 1962      | Water-Shed:        | 458,00km <sup>2</sup> | Length:     | 1.400m                |
| Type:              | earthfill |                    |                       | Volume:     | 387.000m <sup>3</sup> |
|                    |           |                    |                       | Spillway:   |                       |
|                    |           |                    |                       | Length:     | 450m                  |
|                    |           |                    |                       | Capacity:   | 680m <sup>3</sup> /s  |

Designed by: *Water Development Department* Constructed by: *Water Development Department*



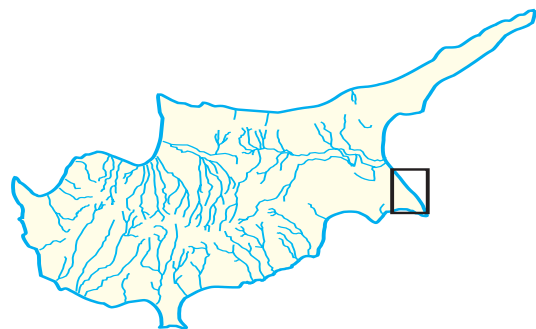
## Panagia (Ammochostou) Dam

45.000 m<sup>3</sup>



|                    |           |                    |          |             |    |
|--------------------|-----------|--------------------|----------|-------------|----|
| Category:          | small dam | Purpose:           | recharge | Embankment: |    |
| River:             | -         | Reservoir surface: | -        | Height:     | 7m |
| Year of Operation: | 1962      | Water-Shed:        | -        | Length:     | -  |
| Type:              | earthfill |                    |          | Volume:     | -  |
|                    |           |                    |          | Spillway:   |    |
|                    |           |                    |          | Length:     | -  |
|                    |           |                    |          | Capacity:   | -  |

Designed by: *Water Development Department* Constructed by: *Water Development Department*



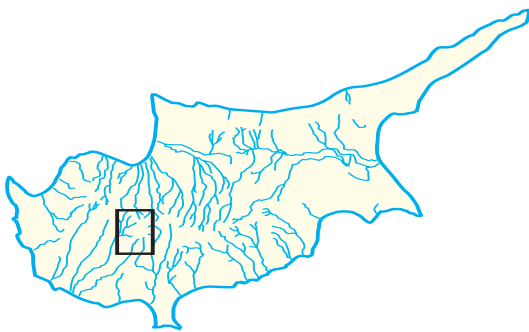
# Prodromos Reservoir Dam

122.000 m<sup>3</sup>



|                    |            |                    |                      |             |                      |
|--------------------|------------|--------------------|----------------------|-------------|----------------------|
| Category:          | small dam  | Purpose:           | irrigation           | Embankment: |                      |
| River:             | Off-stream | Reservoir surface: | 26.000m <sup>2</sup> | Height:     | 10m                  |
| Year of Operation: | 1962       | Water-Shed:        | -                    | Length:     | -                    |
| Type:              | earthfill  |                    |                      | Volume:     | 74.000m <sup>3</sup> |
|                    |            |                    |                      | Spillway:   |                      |
|                    |            |                    |                      | Length:     | -                    |
|                    |            |                    |                      | Capacity:   | -                    |

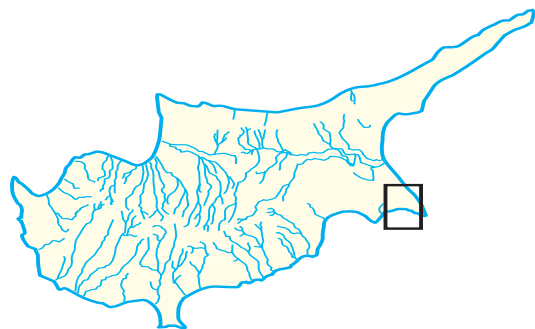
Designed by: *Water Development Department* Constructed by: *Water Development Department*





|                    |           |                    |          |             |    |
|--------------------|-----------|--------------------|----------|-------------|----|
| Category:          | small dam | Purpose:           | recharge | Embankment: |    |
| River:             | -         | Reservoir surface: | -        | Height:     | 8m |
| Year of Operation: | 1963      | Water-Shed:        | -        | Length:     | -  |
| Type:              | earthfill |                    |          | Volume:     | -  |
|                    |           |                    |          | Spillway:   |    |
|                    |           |                    |          | Length:     | -  |
|                    |           |                    |          | Capacity:   | -  |

Designed by: *Water Development Department* Constructed by: *Water Development Department*





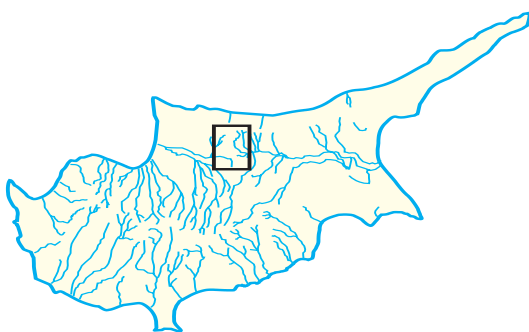
# Kanlikiogiou Dam

1.113.000 m<sup>3</sup>



|                    |                   |                    |                       |             |                      |
|--------------------|-------------------|--------------------|-----------------------|-------------|----------------------|
| Category:          | large dam         | Purpose:           | irrigation            | Embankment: |                      |
| River:             | Chinar (Pediaios) | Reservoir surface: | 390.000m <sup>2</sup> | Height:     | 19m                  |
| Year of Operation: | 1963              | Water-Shed:        | 33,00km <sup>2</sup>  | Length:     | 297m                 |
| Type:              | earthfill         |                    |                       | Volume:     | 52.000m <sup>3</sup> |
|                    |                   |                    |                       | Spillway:   |                      |
|                    |                   |                    |                       | Length:     | 27m                  |
|                    |                   |                    |                       | Capacity:   | 110m <sup>3</sup> /s |

Designed by: *Water Development Department* Constructed by: *Water Development Department*



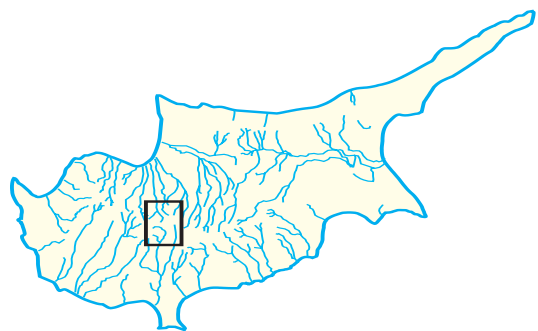
# Agros Dam

99.000 m<sup>3</sup>



|                    |           |                    |                      |             |                      |
|--------------------|-----------|--------------------|----------------------|-------------|----------------------|
| Category:          | large dam | Purpose:           | irrigation           | Embankment: |                      |
| River:             | Limnatis  | Reservoir surface: | 15.000m <sup>2</sup> | Height:     | 26m                  |
| Year of Operation: | 1964      | Water-Shed:        | 0,50km <sup>2</sup>  | Length:     | 171m                 |
| Type:              | earthfill |                    |                      | Volume:     | 53.000m <sup>3</sup> |
|                    |           |                    |                      | Spillway:   |                      |
|                    |           |                    |                      | Length:     | 51m                  |
|                    |           |                    |                      | Capacity:   | 6m <sup>3</sup> /s   |

Designed by: *Water Development Department* Constructed by: *Water Development Department*



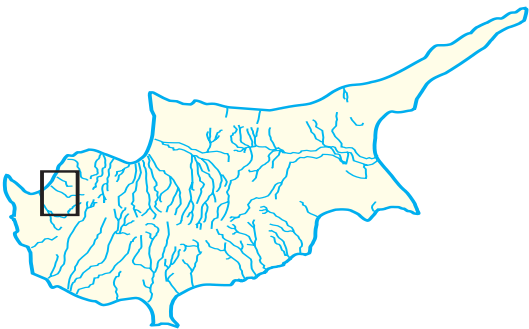
# Argaka Dam

990.000 m<sup>3</sup>



|                    |           |                    |                       |             |                       |
|--------------------|-----------|--------------------|-----------------------|-------------|-----------------------|
| Category:          | large dam | Purpose:           | irrigation            | Embankment: |                       |
| River:             | Makounta  | Reservoir surface: | 107.000m <sup>2</sup> | Height:     | 41m                   |
| Year of Operation: | 1964      | Water-Shed:        | 50,00km <sup>2</sup>  | Length:     | 137m                  |
| Type:              | rockfill  |                    |                       | Volume:     | 134.000m <sup>3</sup> |
|                    |           |                    |                       | Spillway:   |                       |
|                    |           |                    |                       | Length:     | 146m                  |
|                    |           |                    |                       | Capacity:   | 280m <sup>3</sup> /s  |

Designed by: *Howard Humphreys & Sons UK* Constructed by: *Nowlem and Ridgways UK*



## Kiti Dam (Tremithos)

1.614.000 m<sup>3</sup>



Category: large dam  
River: Tremithos  
Year of Operation: 1964  
Type: earthfill

Purpose: irrigation  
Reservoir surface: 360.000m<sup>2</sup>  
Water-Shed: 130,00km<sup>2</sup>

Embankment:  
Height: 22m  
Length: 1.075m  
Volume: 173.000m<sup>3</sup>  
Spillway:  
Length: 150m  
Capacity: 610m<sup>3</sup>/s

Designed by: *Il Nuovo Castoro, Italy* Constructed by: *Water Development Department*



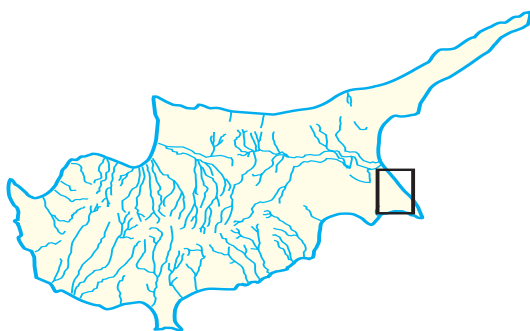
# Paralimni Lake Dam

1.365.000 m<sup>3</sup>



|                    |           |                    |          |             |    |
|--------------------|-----------|--------------------|----------|-------------|----|
| Category:          | small dam | Purpose:           | recharge | Embankment: |    |
| River:             | -         | Reservoir surface: | -        | Height:     | 1m |
| Year of Operation: | 1964      | Water-Shed:        | -        | Length:     | -  |
| Type:              | earthfill |                    |          | Volume:     | -  |
|                    |           |                    |          | Spillway:   |    |
|                    |           |                    |          | Length:     | -  |
|                    |           |                    |          | Capacity:   | -  |

Designed by: *Water Development Department* Constructed by: *Water Development Department*



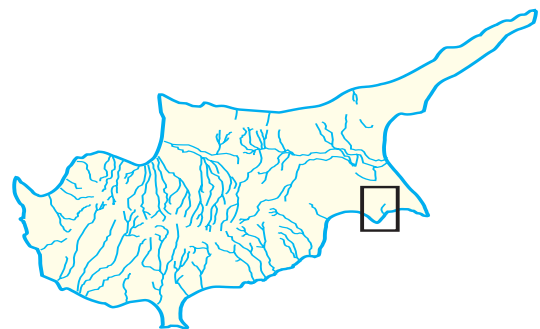
# Liopetri Dam

340.000 m<sup>3</sup>



|                    |           |                    |                      |             |                      |
|--------------------|-----------|--------------------|----------------------|-------------|----------------------|
| Category:          | large dam | Purpose:           | recharge             | Embankment: |                      |
| River:             | Potamos   | Reservoir surface: | 74.000m <sup>2</sup> | Height:     | 18m                  |
| Year of Operation: | 1964      | Water-Shed:        | 37,00km <sup>2</sup> | Length:     | 540m                 |
| Type:              | earthfill |                    |                      | Volume:     | 55.000m <sup>3</sup> |
|                    |           |                    |                      | Spillway:   |                      |
|                    |           |                    |                      | Length:     | 12m                  |
|                    |           |                    |                      | Capacity:   | 90m <sup>3</sup> /s  |

Designed by: *Water Development Department* Constructed by: *Water Development Department*



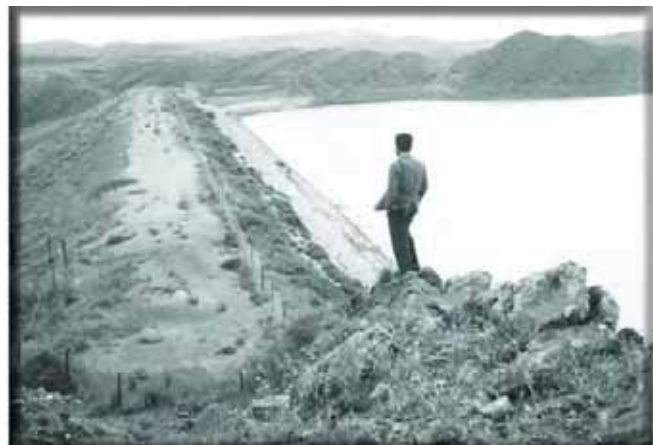
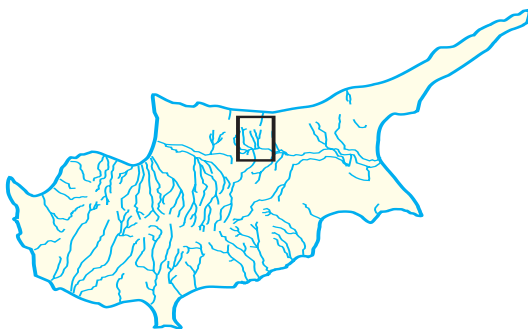
# Mia Milia Dam

355.000 m<sup>3</sup>



|                    |                   |                    |                      |             |                      |
|--------------------|-------------------|--------------------|----------------------|-------------|----------------------|
| Category:          | large dam         | Purpose:           | irrigation           | Embankment: |                      |
| River:             | Simeas (Pediaios) | Reservoir surface: | 68.000m <sup>2</sup> | Height:     | 22m                  |
| Year of Operation: | 1964              | Water-Shed:        | 6,80km <sup>2</sup>  | Length:     | 125m                 |
| Type:              | earthfill         |                    |                      | Volume:     | 53.000m <sup>3</sup> |
|                    |                   |                    |                      | Spillway:   |                      |
|                    |                   |                    |                      | Length:     | 42m                  |
|                    |                   |                    |                      | Capacity:   | 24m <sup>3</sup> /s  |

Designed by: *Water Development Department* Constructed by: *Water Development Department*



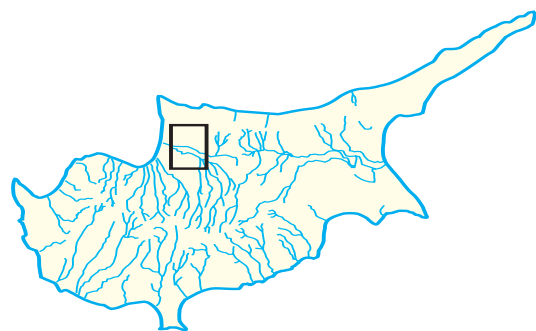
# Ovgos Dam

845.000 m<sup>3</sup>



|                    |           |                    |                       |             |                       |
|--------------------|-----------|--------------------|-----------------------|-------------|-----------------------|
| Category:          | large dam | Purpose:           | irrigation, recharge  | Embankment: |                       |
| River:             | Ovgos     | Reservoir surface: | 260.000m <sup>2</sup> | Height:     | 16m                   |
| Year of Operation: | 1964      | Water-Shed:        | 0,20km <sup>2</sup>   | Length:     | 720m                  |
| Type:              | earthfill |                    |                       | Volume:     | 147.000m <sup>3</sup> |
|                    |           |                    |                       | Spillway:   |                       |
|                    |           |                    |                       | Length:     | 264m                  |
|                    |           |                    |                       | Capacity:   | 780m <sup>3</sup> /s  |

Designed by: *Water Development Department* Constructed by: *Water Development Department*





# Agia Marina Dam

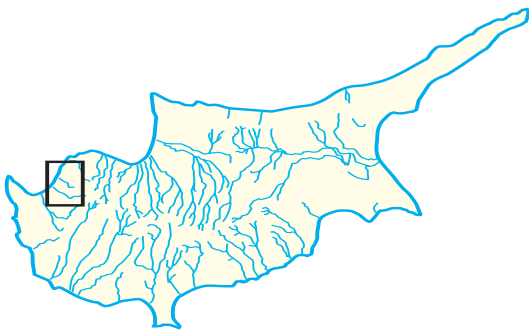
298.000 m<sup>3</sup>



|                    |           |                    |                      |             |                      |
|--------------------|-----------|--------------------|----------------------|-------------|----------------------|
| Category:          | large dam | Purpose:           | irrigation           | Embankment: |                      |
| River:             | Xeros     | Reservoir surface: | 33.000m <sup>2</sup> | Height:     | 33m                  |
| Year of Operation: | 1965      | Water-Shed:        | 8,40km <sup>2</sup>  | Length:     | 116m                 |
| Type:              | rockfill  |                    |                      | Volume:     | 61.000m <sup>3</sup> |
|                    |           |                    |                      | Spillway:   |                      |
|                    |           |                    |                      | Length:     | 26m                  |
|                    |           |                    |                      | Capacity:   | 160m <sup>3</sup> /s |

Designed by: *Energoproject, Yugoslavia*

Constructed by: *Mediterranen Constructors-G.P. Zachariades, Greece - Cyprus*



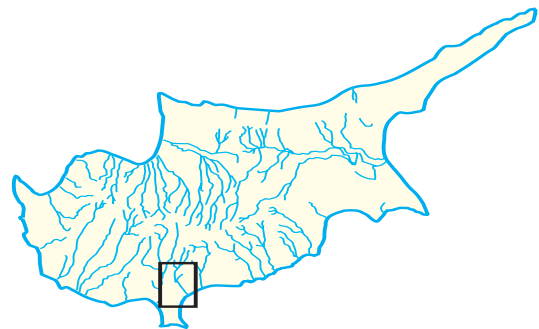
# Polemia Dam

3.400.000 m<sup>3</sup>



|                    |           |                    |                       |             |                       |
|--------------------|-----------|--------------------|-----------------------|-------------|-----------------------|
| Category:          | large dam | Purpose:           | irrigation            | Embankment: |                       |
| River:             | Goryllis  | Reservoir surface: | 110.000m <sup>2</sup> | Height:     | 45m                   |
| Year of Operation: | 1965      | Water-Shed:        | 75,60km <sup>2</sup>  | Length:     | 170m                  |
| Type:              | earthfill |                    |                       | Volume:     | 215.000m <sup>3</sup> |
|                    |           |                    |                       | Spillway:   |                       |
|                    |           |                    |                       | Length:     | 134m                  |
|                    |           |                    |                       | Capacity:   | 580m <sup>3</sup> /s  |

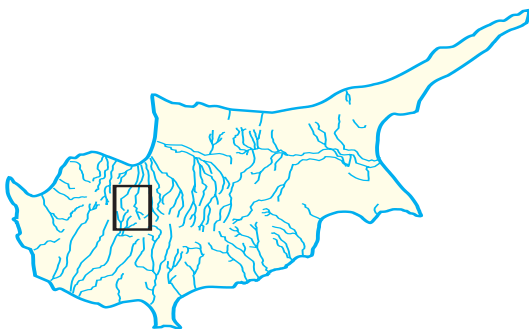
Designed by: *Energoprojekt, Yugoslavia* Constructed by: *Mowlem & Ridway, UK*





|                    |                       |                    |                      |             |                       |
|--------------------|-----------------------|--------------------|----------------------|-------------|-----------------------|
| Category:          | large dam             | Purpose:           | irrigation           | Embankment: |                       |
| River:             | Setrachos (Marathasa) | Reservoir surface: | 47.000m <sup>2</sup> | Height:     | 40m                   |
| Year of Operation: | 1966                  | Water-Shed:        | 26,00km <sup>2</sup> | Length:     | 137m                  |
| Type:              | earthfill             |                    |                      | Volume:     | 156.000m <sup>3</sup> |
|                    |                       |                    |                      | Spillway:   |                       |
|                    |                       |                    |                      | Length:     | 78m                   |
|                    |                       |                    |                      | Capacity:   | 204m <sup>3</sup> /s  |

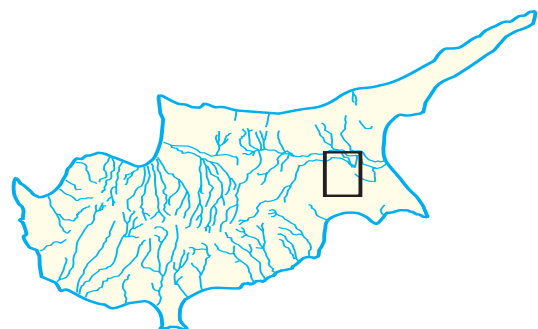
Designed by: *Howard Humphreys & Sons, UK* Constructed by: *Water Development Department*





|                    |           |                    |          |             |    |
|--------------------|-----------|--------------------|----------|-------------|----|
| Category:          | small dam | Purpose:           | recharge | Embankment: |    |
| River:             | -         | Reservoir surface: | -        | Height:     | 8m |
| Year of Operation: | 1966      | Water-Shed:        | -        | Length:     | -  |
| Type:              | earthfill |                    |          | Volume:     | -  |
|                    |           |                    |          | Spillway:   |    |
|                    |           |                    |          | Length:     | -  |
|                    |           |                    |          | Capacity:   | -  |

Designed by: *Water Development Department* Constructed by: *Water Development Department*



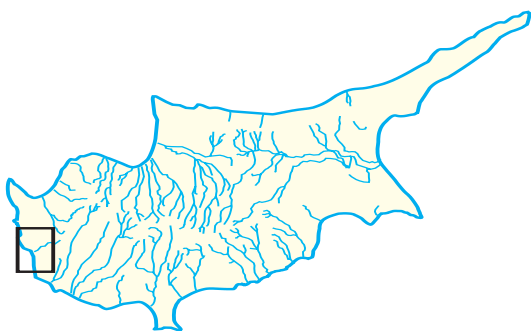
# Mavrokolympos Dam

2.180.000 m<sup>3</sup>



|                    |               |                    |                       |             |                       |
|--------------------|---------------|--------------------|-----------------------|-------------|-----------------------|
| Category:          | large dam     | Purpose:           | irrigation            | Embankment: |                       |
| River:             | Mavrokolympos | Reservoir surface: | 175.000m <sup>2</sup> | Height:     | 45m                   |
| Year of Operation: | 1966          | Water-Shed:        | 37,80km <sup>2</sup>  | Length:     | 183m                  |
| Type:              | earthfill     |                    |                       | Volume:     | 302.000m <sup>3</sup> |
|                    |               |                    |                       | Spillway:   |                       |
|                    |               |                    |                       | Length:     | 284m                  |
|                    |               |                    |                       | Capacity:   | 366m <sup>3</sup> /s  |

Designed by: *Energoproject, Yugoslavia* Constructed by: *Cybarco, Cyprus*



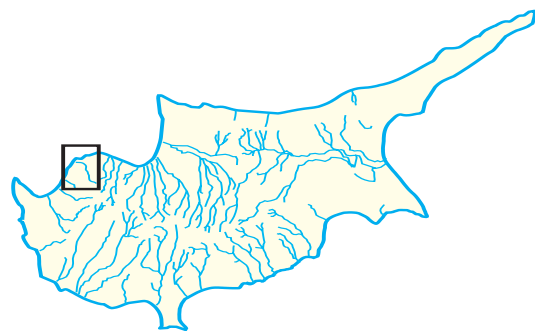
# Pomos Dam

860.000 m<sup>3</sup>



|                    |           |                    |                      |             |                       |
|--------------------|-----------|--------------------|----------------------|-------------|-----------------------|
| Category:          | large dam | Purpose:           | irrigation           | Embankment: |                       |
| River:             | Leivadi   | Reservoir surface: | 83.000m <sup>2</sup> | Height:     | 38m                   |
| Year of Operation: | 1966      | Water-Shed:        | 36,30km <sup>2</sup> | Length:     | 168m                  |
| Type:              | rockfill  |                    |                      | Volume:     | 150.000m <sup>3</sup> |
|                    |           |                    |                      | Spillway:   |                       |
|                    |           |                    |                      | Length:     | 129m                  |
|                    |           |                    |                      | Capacity:   | 280m <sup>3</sup> /s  |

Designed by: *Energoproject, Yugoslavia*  
Constructed by: *Mediterranean Constructors-G.P. Zachariades, Greece - Cyprus*



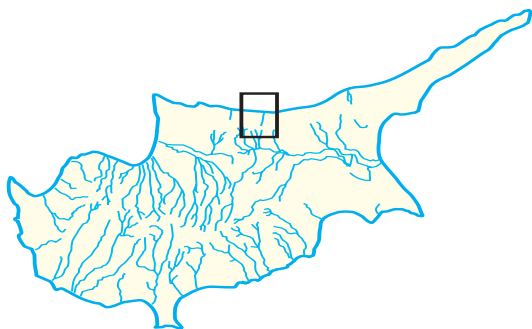
# Agios Epiktitos Dam

34.000 m<sup>3</sup>



|                    |           |                    |          |             |    |
|--------------------|-----------|--------------------|----------|-------------|----|
| Category:          | small dam | Purpose:           | recharge | Embankment: |    |
| River:             | -         | Reservoir surface: | -        | Height:     | 6m |
| Year of Operation: | 1968      | Water-Shed:        | -        | Length:     | -  |
| Type:              | earthfill |                    |          | Volume:     | -  |
|                    |           |                    |          | Spillway:   | -  |
|                    |           |                    |          | Length:     | -  |
|                    |           |                    |          | Capacity:   | -  |

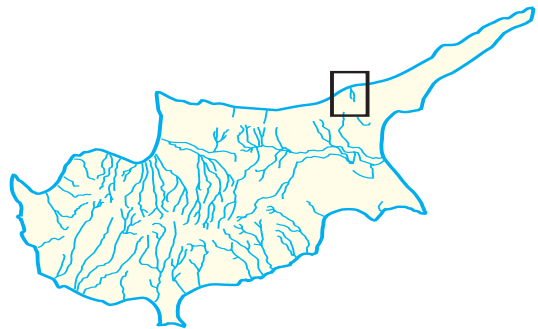
Designed by: *Water Development Department* Constructed by: *Water Development Department*





|                    |           |                    |          |             |    |
|--------------------|-----------|--------------------|----------|-------------|----|
| Category:          | small dam | Purpose:           | recharge | Embankment: |    |
| River:             | -         | Reservoir surface: | -        | Height:     | 6m |
| Year of Operation: | 1968      | Water-Shed:        | -        | Length:     | -  |
| Type:              | earthfill |                    |          | Volume:     | -  |
|                    |           |                    |          | Spillway:   |    |
|                    |           |                    |          | Length:     | -  |
|                    |           |                    |          | Capacity:   | -  |

Designed by: *Water Development Department* Constructed by: *Water Development Department*





## Germasoyeia Dam

13.500.000 m<sup>3</sup>



Category: large dam

Purpose: irrigation

Embankment:

River: Germasoyeia

Reservoir surface: 1.100m<sup>2</sup>

Height: 49m

Year of Operation: 1968

Water-Shed: 156,70km<sup>2</sup>

Length: 294m

Type: earthfill

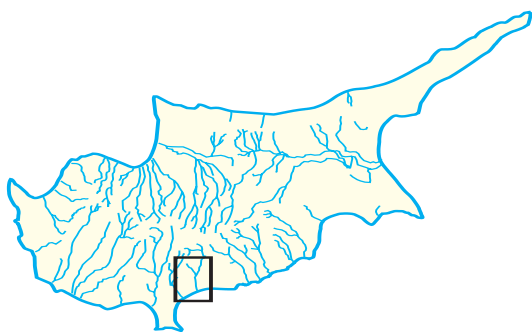
Volume: 525.000m<sup>3</sup>

Spillway:

Length: 115m

Capacity: 850m<sup>3</sup>/s

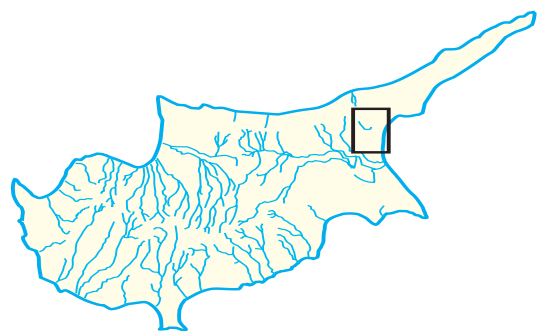
Designed by: *Energoproject, Yugoslavia* Constructed by: *Cybarco, Cyprus*





|                    |           |                    |                       |             |                      |
|--------------------|-----------|--------------------|-----------------------|-------------|----------------------|
| Category:          | small dam | Purpose:           | irrigation, recharge  | Embankment: |                      |
| River:             | Merikeros | Reservoir surface: | 720.000m <sup>2</sup> | Height:     | 7m                   |
| Year of Operation: | 1968      | Water-Shed:        | 44,00km <sup>2</sup>  | Length:     | 489m                 |
| Type:              | earthfill |                    |                       | Volume:     | 63.000m <sup>3</sup> |
|                    |           |                    |                       | Spillway:   |                      |
|                    |           |                    |                       | Length:     | 19m                  |
|                    |           |                    |                       | Capacity:   | 164m <sup>3</sup> /s |

Designed by: *Water Development Department* Constructed by: *Water Development Department*



# Lefkara Dam

13.850.000 m<sup>3</sup>



Category: large dam

Purpose: domestic/irrigation

Embankment:

River: Syriatis (Pentaschoinos)

Reservoir surface: 650.000m<sup>2</sup>

Height: 71m

Year of Operation: 1973

Water-Shed: 36,30km<sup>2</sup>

Length: 233m

Type: earth/rockfill

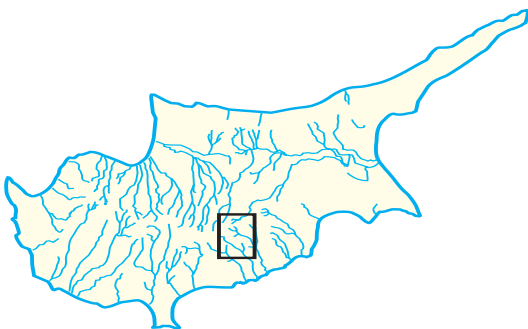
Volume: 830.000m<sup>3</sup>

Spillway:

Length: 70m

Capacity: 300m<sup>3</sup>/s

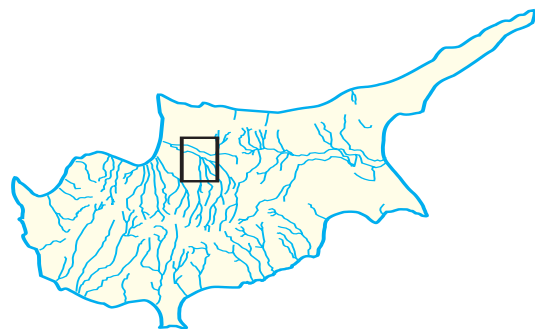
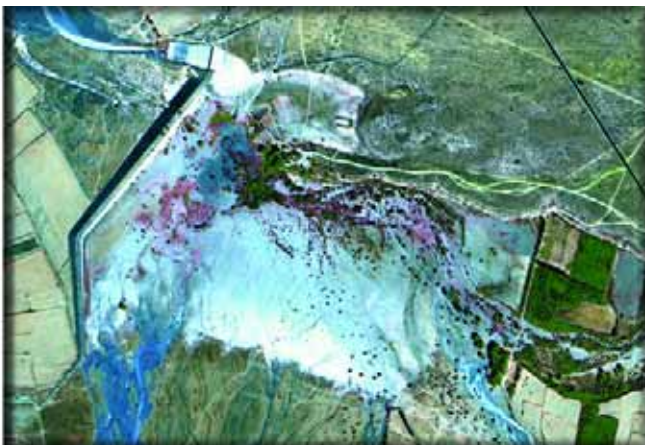
Designed by: *Howard Humphreys & Sons, UK* Constructed by: *J.V.L. Fairclough of UK & Medcon, Cyprus*





|                    |           |                    |                       |             |                       |
|--------------------|-----------|--------------------|-----------------------|-------------|-----------------------|
| Category:          | large dam | Purpose:           | recharge              | Embankment: |                       |
| River:             | Serrachis | Reservoir surface: | 620.000m <sup>2</sup> | Height:     | 15m                   |
| Year of Operation: | 1973      | Water-Shed:        | 430,00km <sup>2</sup> | Length:     | 1.000m                |
| Type:              | earthfill |                    |                       | Volume:     | 278.000m <sup>3</sup> |
|                    |           |                    |                       | Spillway:   |                       |
|                    |           |                    |                       | Length:     | 110m                  |
|                    |           |                    |                       | Capacity:   | 560m <sup>3</sup> /s  |

Designed by: *Water Development Department* Constructed by: *Water Development Department*



## Palaichori - Kampi Dam

620.000 m<sup>3</sup>



Category: large dam

Purpose: irrigation

Embankment:

River: Akaki (Serrachis)

Reservoir surface: 110.000m<sup>2</sup>

Height: 33m

Year of Operation: 1973

Water-Shed: 8,00km<sup>2</sup>

Length: 132m

Type: gravity

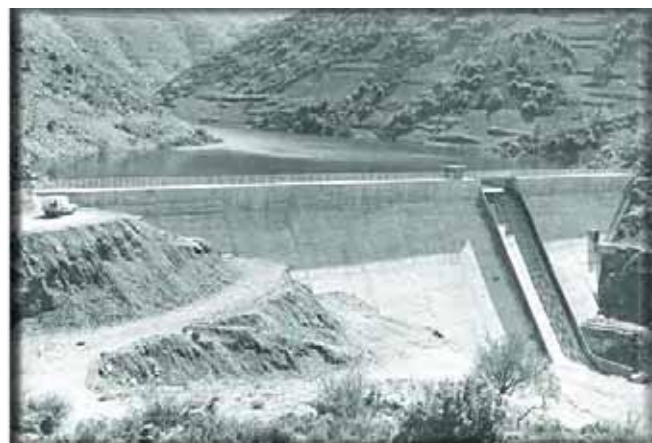
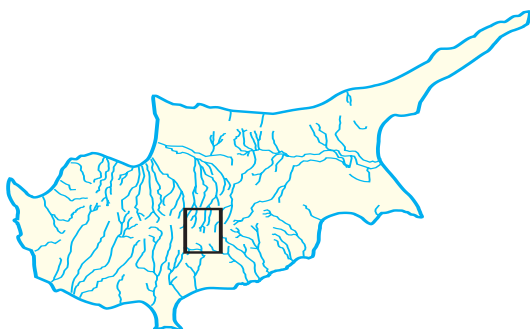
Volume: 39.000m<sup>3</sup>

Spillway:

Length: 45m

Capacity: 63m<sup>3</sup>/s

Designed by: *Water Development Department* Constructed by: *Ioannou & Paraskevaides*



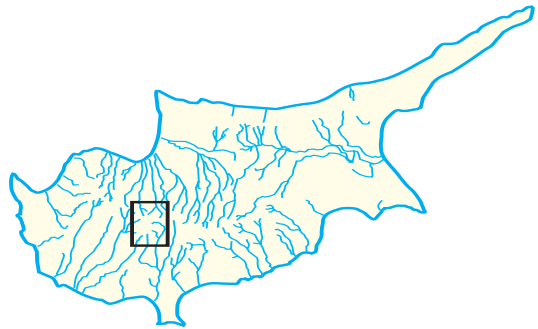
# Kyperounta No 1 Dam

50.000 m<sup>3</sup>



|                    |              |                    |                     |             |    |
|--------------------|--------------|--------------------|---------------------|-------------|----|
| Category:          | small dam    | Purpose:           | irrigation          | Embankment: |    |
| River:             | Off - stream | Reservoir surface: | -                   | Height:     | 7m |
| Year of Operation: | 1974         | Water-Shed         |                     | Length:     | -  |
| Type:              | earthfill    | Diversion Wier:    | 1,00km <sup>2</sup> | Volume:     | -  |
|                    |              |                    |                     | Spillway:   |    |
|                    |              |                    |                     | Length:     | -  |
|                    |              |                    |                     | Capacity:   | -  |

Designed by: *Water Development Department* Constructed by: *Water Development Department*



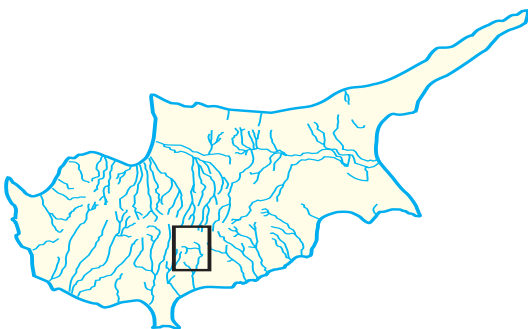
# Arakapas Dam

129.000 m<sup>3</sup>



|                    |             |                    |                      |             |                      |
|--------------------|-------------|--------------------|----------------------|-------------|----------------------|
| Category:          | large dam   | Purpose:           | irrigation           | Embankment: |                      |
| River:             | Germasoyeia | Reservoir surface: | 20.000m <sup>2</sup> | Height:     | 23m                  |
| Year of Operation: | 1975        | Water-Shed:        | 37,70km <sup>2</sup> | Length:     | 97m                  |
| Type:              | gravity     |                    |                      | Volume:     | 10.000m <sup>3</sup> |
|                    |             |                    |                      | Spillway:   |                      |
|                    |             |                    |                      | Length:     | 45m                  |
|                    |             |                    |                      | Capacity:   | 204m <sup>3</sup> /s |

Designed by: *Water Development Department* Constructed by: *Water Development Department*



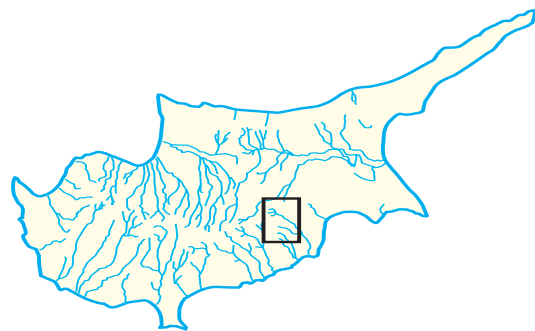
# Lympia (new) Dam

220.000 m<sup>3</sup>



|                    |           |                    |                      |             |                      |
|--------------------|-----------|--------------------|----------------------|-------------|----------------------|
| Category:          | small dam | Purpose:           | irrigation           | Embankment: |                      |
| River:             | Tremithos | Reservoir surface: | 90.000m <sup>2</sup> | Height:     | 12m                  |
| Year of Operation: | 1977      | Water-Shed:        | 29,00km <sup>2</sup> | Length:     | 122m                 |
| Type:              | gravity   |                    |                      | Volume:     | 5.000m <sup>3</sup>  |
|                    |           |                    |                      | Spillway:   |                      |
|                    |           |                    |                      | Length:     | 25m                  |
|                    |           |                    |                      | Capacity:   | 155m <sup>3</sup> /s |

Designed by: *Water Development Department* Constructed by: *Water Development Department*

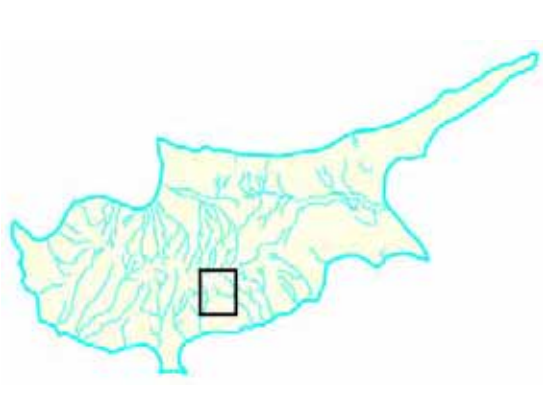






|                    |              |                    |                      |             |                      |
|--------------------|--------------|--------------------|----------------------|-------------|----------------------|
| Category:          | large dam    | Purpose:           | irrigation           | Embankment: |                      |
| River:             | Off - stream | Reservoir surface: | 11.000m <sup>2</sup> | Height:     | 17m                  |
| Year of Operation: | 1980         | Water-Shed         |                      | Length:     | -                    |
| Type:              | earthfill    | Diversion Wier:    | -                    | Volume:     | 32.000m <sup>3</sup> |
|                    |              |                    |                      | Spillway:   |                      |
|                    |              |                    |                      | Length:     | -                    |
|                    |              |                    |                      | Capacity:   | -                    |

Designed by: *Water Development Department* Constructed by: *Iacovou Bros*



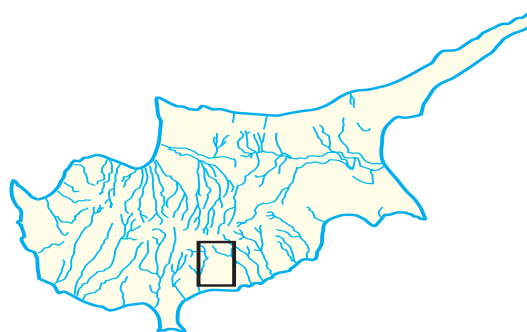
# Eptagoneia No 1 Dam

92.000 m<sup>3</sup>



|                    |              |                    |                      |             |                      |
|--------------------|--------------|--------------------|----------------------|-------------|----------------------|
| Category:          | large dam    | Purpose:           | irrigation           | Embankment: |                      |
| River:             | Off - stream | Reservoir surface: | 17.000m <sup>2</sup> | Height:     | 16m                  |
| Year of Operation: | 1980         | Water-Shed         |                      | Length:     | -                    |
| Type:              | earthfill    | Diversion Wier:    | 5,00km <sup>2</sup>  | Volume:     | 46.000m <sup>3</sup> |
|                    |              |                    |                      | Spillway:   |                      |
|                    |              |                    |                      | Length:     | -                    |
|                    |              |                    |                      | Capacity:   | -                    |

Designed by: *Water Development Department* Constructed by: *Iacovou Bros*



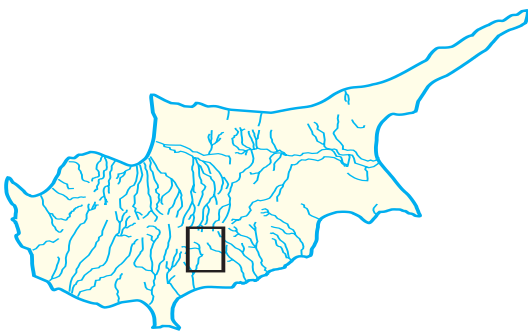
# Melini No 1 Dam

59.000 m<sup>3</sup>



|                    |              |                               |                      |             |                      |
|--------------------|--------------|-------------------------------|----------------------|-------------|----------------------|
| Category:          | large dam    | Purpose:                      | irrigation           | Embankment: |                      |
| River:             | Off - stream | Reservoir surface:            | 13.000m <sup>2</sup> | Height:     | 22m                  |
| Year of Operation: | 1980         | Water-Shed<br>Diversion Wier: | 6,5km <sup>2</sup>   | Length:     | -                    |
| Type:              | earthfill    |                               |                      | Volume:     | 32.000m <sup>3</sup> |
|                    |              |                               |                      | Spillway:   |                      |
|                    |              |                               |                      | Length:     | -                    |
|                    |              |                               |                      | Capacity:   | -                    |

Designed by: *Water Development Department* Constructed by: *Iacovou Bros*



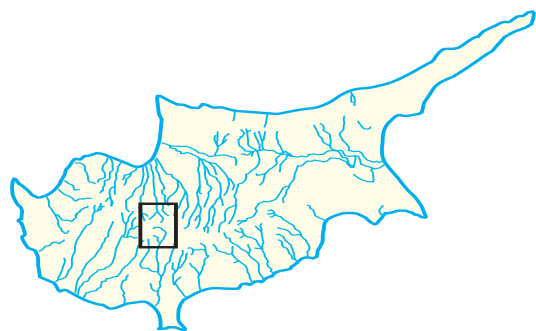
# Pelendri Dam

123.000 m<sup>3</sup>



|                    |              |                               |                      |             |                      |
|--------------------|--------------|-------------------------------|----------------------|-------------|----------------------|
| Category:          | large dam    | Purpose:                      | irrigation           | Embankment: |                      |
| River:             | Off - stream | Reservoir surface:            | 21.000m <sup>2</sup> | Height:     | 18m                  |
| Year of Operation: | 1980         | Water-Shed<br>Diversion Wier: | 2,00km <sup>2</sup>  | Length:     | -                    |
| Type:              | earthfill    |                               |                      | Volume:     | 59.000m <sup>3</sup> |
|                    |              |                               |                      | Spillway:   |                      |
|                    |              |                               |                      | Length:     | -                    |
|                    |              |                               |                      | Capacity:   | -                    |

Designed by: *Water Development Department* Constructed by: *Fysco Constructing Ltd*



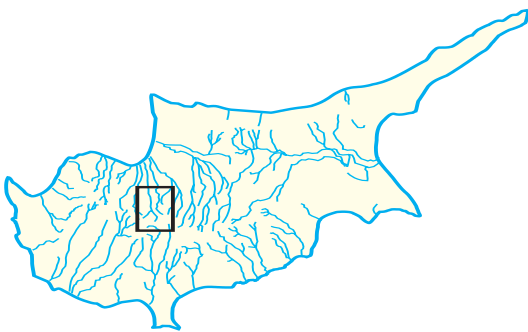
# Chandria Dam

70.000 m<sup>3</sup>



|                    |              |                    |                      |             |                      |
|--------------------|--------------|--------------------|----------------------|-------------|----------------------|
| Category:          | large dam    | Purpose:           | irrigation           | Embankment: |                      |
| River:             | Off - stream | Reservoir surface: | 14.000m <sup>2</sup> | Height:     | 35m                  |
| Year of Operation: | 1980         | Water-Shed         |                      | Length:     | -                    |
| Type:              | earthfill    | Diversion Wier:    | 0,8km <sup>2</sup>   | Volume:     | 41.000m <sup>3</sup> |
|                    |              |                    |                      | Spillway:   |                      |
|                    |              |                    |                      | Length:     | -                    |
|                    |              |                    |                      | Capacity:   | -                    |

Designed by: *Water Development Department* Constructed by: *Cybarco Ltd*



## Agioi Vavatsinias Dam

53.000 m<sup>3</sup>



|                    |           |                    |                      |             |                     |
|--------------------|-----------|--------------------|----------------------|-------------|---------------------|
| Category:          | large dam | Purpose:           | irrigation           | Embankment: |                     |
| River:             | Vasilikos | Reservoir surface: | 12.000m <sup>2</sup> | Height:     | 19m                 |
| Year of Operation: | 1981      | Water-Shed:        | 8,60km <sup>2</sup>  | Length:     | 58m                 |
| Type:              | arch      |                    |                      | Volume:     | 2.000m <sup>3</sup> |
|                    |           |                    |                      | Spillway:   |                     |
|                    |           |                    |                      | Length:     | -                   |
|                    |           |                    |                      | Capacity:   | 63m <sup>3</sup> /s |

Designed by: *Water Development Department* Constructed by: *Water Development Department*



## Akapnou-Eptagoneia Dam

132.000 m<sup>3</sup>



|                    |              |                               |                      |             |                      |
|--------------------|--------------|-------------------------------|----------------------|-------------|----------------------|
| Category:          | large dam    | Purpose:                      | irrigation           | Embankment: |                      |
| River:             | Off - stream | Reservoir surface:            | 33.000m <sup>2</sup> | Height:     | 9m                   |
| Year of Operation: | 1981         | Water-Shed<br>Diversion Wier: | 19,6km <sup>2</sup>  | Length:     | -                    |
| Type:              | earthfill    |                               |                      | Volume:     | 67.000m <sup>3</sup> |
|                    |              |                               |                      | Spillway:   |                      |
|                    |              |                               |                      | Length:     | -                    |
|                    |              |                               |                      | Capacity:   | -                    |

Designed by: *Water Development Department* Constructed by: *Iacovou Brothers (Construction) Ltd*



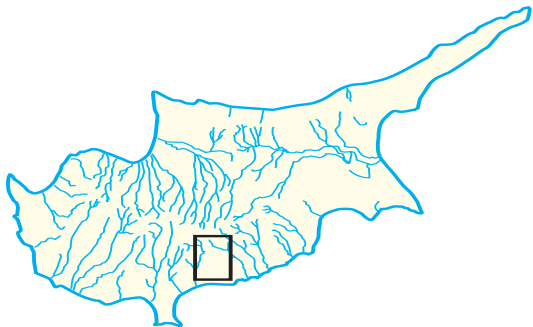
# Eptagoneia No 3 Dam

65.000 m<sup>3</sup>



|                    |              |                    |                      |             |                      |
|--------------------|--------------|--------------------|----------------------|-------------|----------------------|
| Category:          | small dam    | Purpose:           | irrigation           | Embankment: |                      |
| River:             | Off - stream | Reservoir surface: | 24.000m <sup>2</sup> | Height:     | 12m                  |
| Year of Operation: | 1981         | Water-Shed         |                      | Length:     | -                    |
| Type:              | earthfill    | Diversion Wier:    | 3,9km <sup>2</sup>   | Volume:     | 67.000m <sup>3</sup> |
|                    |              |                    |                      | Spillway:   |                      |
|                    |              |                    |                      | Length:     | -                    |
|                    |              |                    |                      | Capacity:   | -                    |

Designed by: *Water Development Department* Constructed by: *Iacovou Bros*





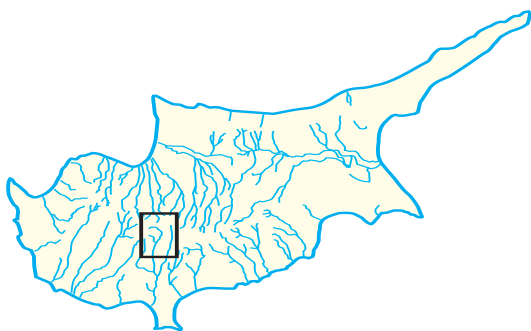
# Kato Mylos Dam

104.000 m<sup>3</sup>



|                    |              |                               |                      |             |                      |
|--------------------|--------------|-------------------------------|----------------------|-------------|----------------------|
| Category:          | large dam    | Purpose:                      | irrigation           | Embankment: |                      |
| River:             | Off - stream | Reservoir surface:            | 20.000m <sup>2</sup> | Height:     | 23m                  |
| Year of Operation: | 1981         | Water-Shed<br>Diversion Wier: | 6,2km <sup>2</sup>   | Length:     | -                    |
| Type:              | earthfill    |                               |                      | Volume:     | 41.000m <sup>3</sup> |
|                    |              |                               |                      | Spillway:   |                      |
|                    |              |                               |                      | Length:     | -                    |
|                    |              |                               |                      | Capacity:   | -                    |

Designed by: *Water Development Department* Constructed by: *Phoenix Construction Ltd*



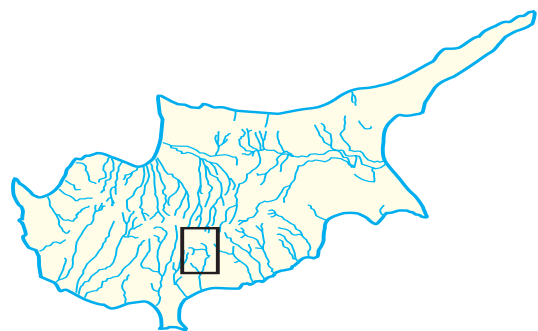
## Arakapas No 1 Dam

192.000 m<sup>3</sup>



|                    |              |                    |                      |             |                      |
|--------------------|--------------|--------------------|----------------------|-------------|----------------------|
| Category:          | small dam    | Purpose:           | irrigation           | Embankment: |                      |
| River:             | Off - stream | Reservoir surface: | 31.000m <sup>2</sup> | Height:     | 12m                  |
| Year of Operation: | 1982         | Water-Shed         |                      | Length:     | -                    |
| Type:              | earthfill    | Diversion Wier:    | 4,6km <sup>2</sup>   | Volume:     | 77.000m <sup>3</sup> |
|                    |              |                    |                      | Spillway:   |                      |
|                    |              |                    |                      | Length:     | -                    |
|                    |              |                    |                      | Capacity:   | -                    |

Designed by: *Water Development Department* Constructed by: *Iacovou Bros*



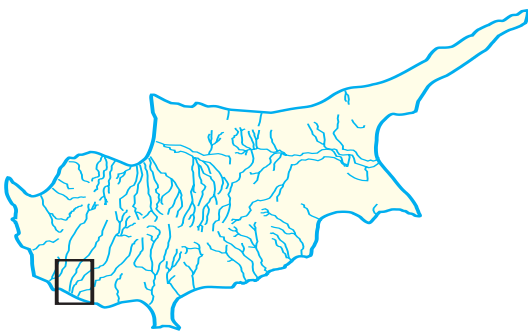
# Asprokremmos Dam

52.375.000 m<sup>3</sup>



|                    |               |                    |                         |             |                         |
|--------------------|---------------|--------------------|-------------------------|-------------|-------------------------|
| Category:          | large dam     | Purpose:           | irrigation              | Embankment: |                         |
| River:             | Xeros Potamos | Reservoir surface: | 2.590.000m <sup>2</sup> | Height:     | 53m                     |
| Year of Operation: | 1982          | Water-Shed:        | 227,00km <sup>2</sup>   | Length:     | 700m                    |
| Type:              | earthfill     |                    |                         | Volume:     | 2.097.000m <sup>3</sup> |
|                    |               |                    |                         | Spillway:   |                         |
|                    |               |                    |                         | Length:     | 230m                    |
|                    |               |                    |                         | Capacity:   | 1.484m <sup>3</sup> /s  |

Designed by: *Sir M. MacDonald & Partners* Constructed by: *J&P and Medcon Construction Ltd., JV*



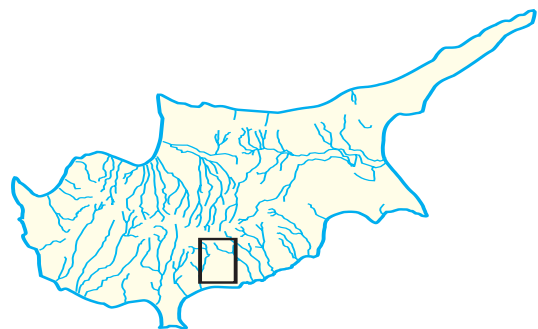
# Eptagoneia No 2 Dam

127.000 m<sup>3</sup>



|                    |              |                    |                      |             |                      |
|--------------------|--------------|--------------------|----------------------|-------------|----------------------|
| Category:          | small dam    | Purpose:           | irrigation           | Embankment: |                      |
| River:             | Off - stream | Reservoir surface: | 36.000m <sup>2</sup> | Height:     | 8m                   |
| Year of Operation: | 1982         | Water-Shed         |                      | Length:     | -                    |
| Type:              | earthfill    | Diversion Wier:    | 3,9km <sup>2</sup>   | Volume:     | 68.000m <sup>3</sup> |
|                    |              |                    |                      | Spillway:   |                      |
|                    |              |                    |                      | Length:     | -                    |
|                    |              |                    |                      | Capacity:   | -                    |

Designed by: *Water Development Department* Constructed by: *Hadjiconstantis-Fysentzides-Charalambous*



## Xyliatos No 2 Dam

1.430.000 m<sup>3</sup>



Category: large dam

River: Lagoudera (Elia)

Year of Operation: 1982

Type: rockfill

Purpose: irrigation

Reservoir surface: 96.000m<sup>2</sup>

Water-Shed: 19,20km<sup>2</sup>

Embankment:

Height: 42m

Length: 155m

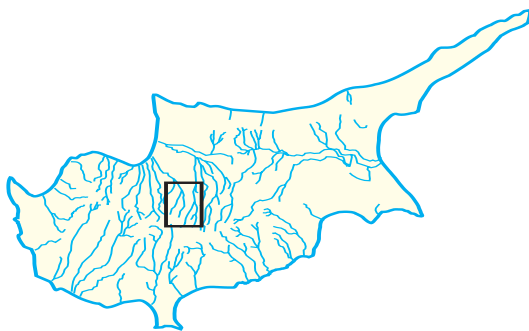
Volume: 240.000m<sup>3</sup>

Spillway:

Length: 75m

Capacity: 100m<sup>3</sup>/s

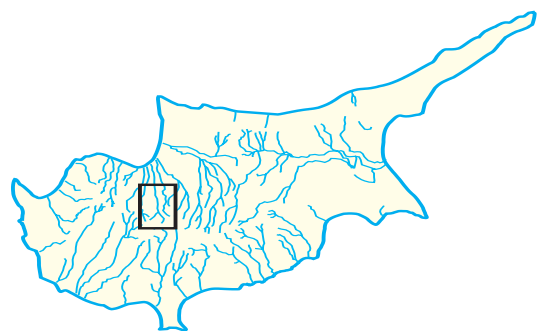
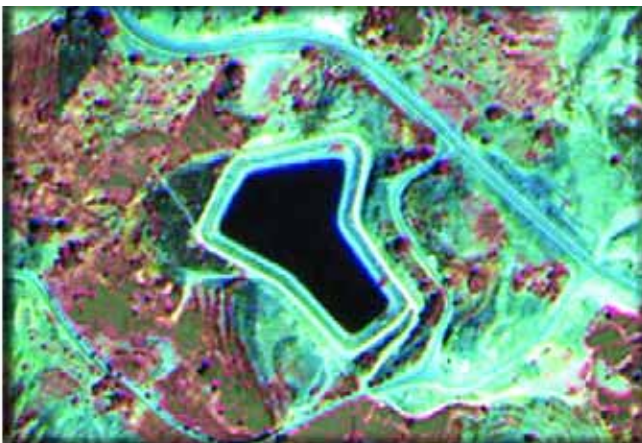
Designed by: *Water Development Department* Constructed by: *General Construction Co*





|                    |              |                               |                      |             |                      |
|--------------------|--------------|-------------------------------|----------------------|-------------|----------------------|
| Category:          | large dam    | Purpose:                      | irrigation           | Embankment: |                      |
| River:             | Off - stream | Reservoir surface:            | 12.000m <sup>2</sup> | Height:     | 18m                  |
| Year of Operation: | 1983         | Water-Shed<br>Diversion Wier: | 0,7km <sup>2</sup>   | Length:     | -                    |
| Type:              | earthfill    |                               |                      | Volume:     | 25.000m <sup>3</sup> |
|                    |              |                               |                      | Spillway:   |                      |
|                    |              |                               |                      | Length:     | -                    |
|                    |              |                               |                      | Capacity:   | -                    |

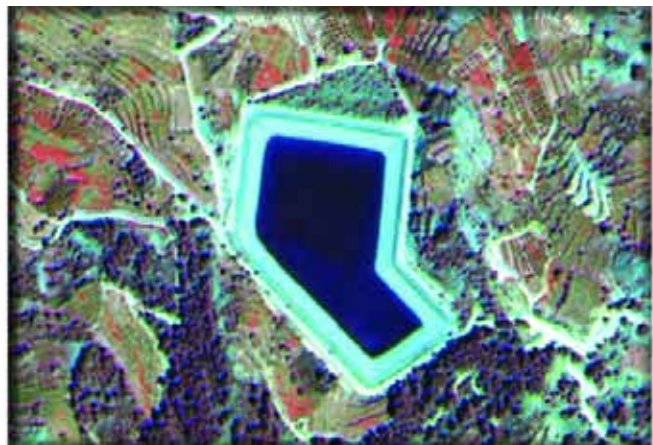
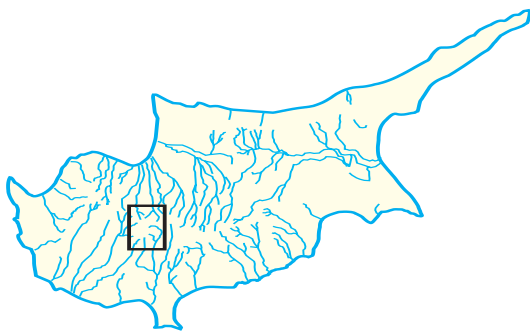
Designed by: *Water Development Department* Constructed by: *Iacovou Bros*





|                    |              |                               |                      |             |                      |
|--------------------|--------------|-------------------------------|----------------------|-------------|----------------------|
| Category:          | large dam    | Purpose:                      | irrigation           | Embankment: |                      |
| River:             | Off - stream | Reservoir surface:            | 36.000m <sup>2</sup> | Height:     | 27m                  |
| Year of Operation: | 1983         | Water-Shed<br>Diversion Wier: | 1,6km <sup>2</sup>   | Length:     | -                    |
| Type:              | earthfill    |                               |                      | Volume:     | 94.000m <sup>3</sup> |
|                    |              |                               |                      | Spillway:   |                      |
|                    |              |                               |                      | Length:     | -                    |
|                    |              |                               |                      | Capacity:   | -                    |

Designed by: *Water Development Department*    Constructed by: *Iacovou Bros*



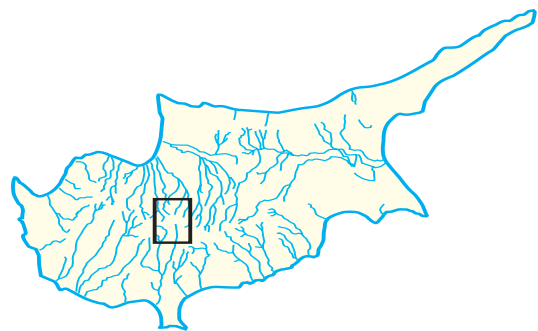
# Lagoudera Dam

71.000 m<sup>3</sup>



|                    |              |                    |                      |             |                      |
|--------------------|--------------|--------------------|----------------------|-------------|----------------------|
| Category:          | large dam    | Purpose:           | irrigation           | Embankment: |                      |
| River:             | Off - stream | Reservoir surface: | 14.000m <sup>2</sup> | Height:     | 36m                  |
| Year of Operation: | 1983         | Water-Shed         |                      | Length:     | -                    |
| Type:              | earthfill    | Diversion Wier:    | 5,7km <sup>2</sup>   | Volume:     | 63.000m <sup>3</sup> |
|                    |              |                    |                      | Spillway:   |                      |
|                    |              |                    |                      | Length:     | -                    |
|                    |              |                    |                      | Capacity:   | -                    |

Designed by: *Water Development Department* Constructed by: *Phoenix Construction Ltd Kykon*





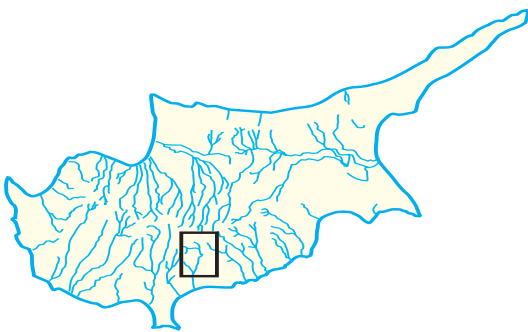
# Ora Dam

62.000 m<sup>3</sup>



|                    |              |                    |                      |             |                      |
|--------------------|--------------|--------------------|----------------------|-------------|----------------------|
| Category:          | small dam    | Purpose:           | irrigation           | Embankment: |                      |
| River:             | Off - stream | Reservoir surface: | 13.000m <sup>2</sup> | Height:     | 18m                  |
| Year of Operation: | 1983         | Water-Shed         |                      | Length:     | -                    |
| Type:              | earthfill    | Diversion Wier:    | 1,7km <sup>2</sup>   | Volume:     | 34.000m <sup>3</sup> |
|                    |              |                    |                      | Spillway:   |                      |
|                    |              |                    |                      | Length:     | -                    |
|                    |              |                    |                      | Capacity:   | -                    |

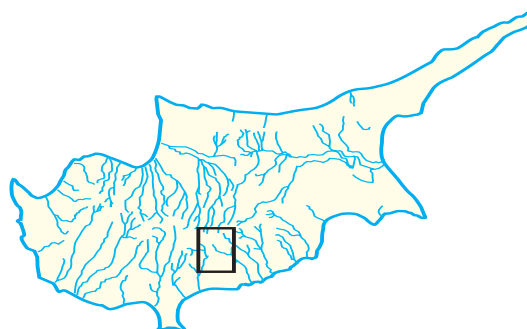
Designed by: *Water Development Department* Constructed by: *Phoenix Construction Ltd*





|                    |              |                    |                     |             |                      |
|--------------------|--------------|--------------------|---------------------|-------------|----------------------|
| Category:          | large dam    | Purpose:           | irrigation          | Embankment: |                      |
| River:             | Off - stream | Reservoir surface: | 9.000m <sup>2</sup> | Height:     | 25m                  |
| Year of Operation: | 1984         | Water-Shed         |                     | Length:     | -                    |
| Type:              | earthfill    | Diversion Wier:    | -                   | Volume:     | 30.000m <sup>3</sup> |
|                    |              |                    |                     | Spillway:   |                      |
|                    |              |                    |                     | Length:     | -                    |
|                    |              |                    |                     | Capacity:   | -                    |

Designed by: *Water Development Department* Constructed by: *Chr. Charalambous*



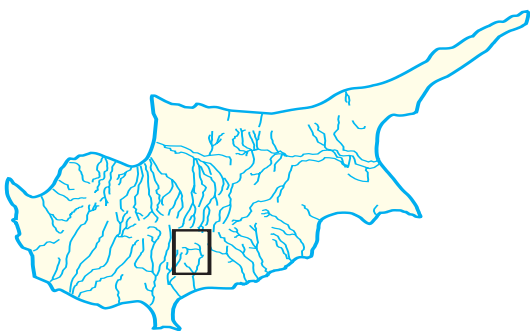
# Arakapas No 2 Dam

120.000 m<sup>3</sup>



|                    |              |                    |                      |             |                      |
|--------------------|--------------|--------------------|----------------------|-------------|----------------------|
| Category:          | small dam    | Purpose:           | irrigation           | Embankment: |                      |
| River:             | Off - stream | Reservoir surface: | 27.000m <sup>2</sup> | Height:     | 12m                  |
| Year of Operation: | 1984         | Water-Shed         |                      | Length:     | -                    |
| Type:              | earthfill    | Diversion Wier:    | 4,5km <sup>2</sup>   | Volume:     | 44.000m <sup>3</sup> |
|                    |              |                    |                      | Spillway:   |                      |
|                    |              |                    |                      | Length:     | -                    |
|                    |              |                    |                      | Capacity:   | -                    |

Designed by: *Water Development Department* Constructed by: *Char. Apostolides*



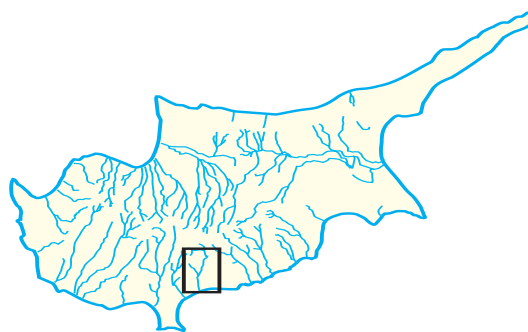
# Dierona Dam

159.000 m<sup>3</sup>



|                    |              |                               |                      |             |                      |
|--------------------|--------------|-------------------------------|----------------------|-------------|----------------------|
| Category:          | large dam    | Purpose:                      | irrigation           | Embankment: |                      |
| River:             | Off - stream | Reservoir surface:            | 27.000m <sup>2</sup> | Height:     | 24m                  |
| Year of Operation: | 1984         | Water-Shed<br>Diversion Wier: | 18,7km <sup>2</sup>  | Length:     | -                    |
| Type:              | earthfill    |                               |                      | Volume:     | 59.000m <sup>3</sup> |
|                    |              |                               |                      | Spillway:   |                      |
|                    |              |                               |                      | Length:     | -                    |
|                    |              |                               |                      | Capacity:   | -                    |

Designed by: *Water Development Department* Constructed by: *Char. Apostolides*



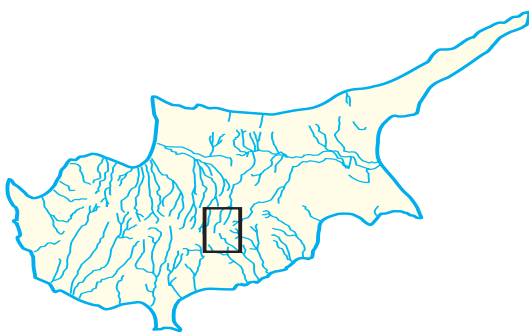
# Farmakas No 1 Dam

21.000 m<sup>3</sup>



|                    |              |                    |                     |             |                      |
|--------------------|--------------|--------------------|---------------------|-------------|----------------------|
| Category:          | small dam    | Purpose:           | irrigation          | Embankment: |                      |
| River:             | Off - stream | Reservoir surface: | 6.000m <sup>2</sup> | Height:     | 18m                  |
| Year of Operation: | 1984         | Water-Shed         |                     | Length:     | -                    |
| Type:              | earthfill    | Diversion Wier:    | -                   | Volume:     | 19.000m <sup>3</sup> |
|                    |              |                    |                     | Spillway:   |                      |
|                    |              |                    |                     | Length:     | -                    |
|                    |              |                    |                     | Capacity:   | -                    |

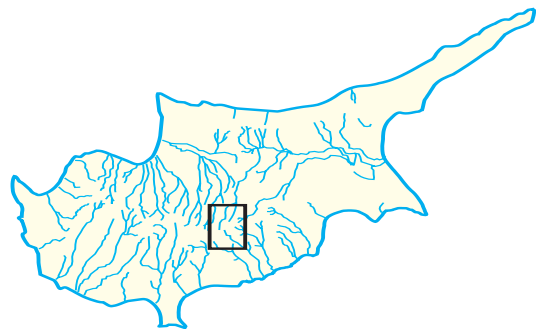
Designed by: *Water Development Department* Constructed by: *Iacovou Bros*





|                    |              |                    |                      |             |                      |
|--------------------|--------------|--------------------|----------------------|-------------|----------------------|
| Category:          | small dam    | Purpose:           | irrigation           | Embankment: |                      |
| River:             | Off - stream | Reservoir surface: | 12.000m <sup>2</sup> | Height:     | 24m                  |
| Year of Operation: | 1984         | Water-Shed         |                      | Length:     | -                    |
| Type:              | earthfill    | Diversion Wier:    | -                    | Volume:     | 47.000m <sup>3</sup> |
|                    |              |                    |                      | Spillway:   |                      |
|                    |              |                    |                      | Length:     | -                    |
|                    |              |                    |                      | Capacity:   | -                    |

Designed by: *Water Development Department* Constructed by: *Iacovou Bros*



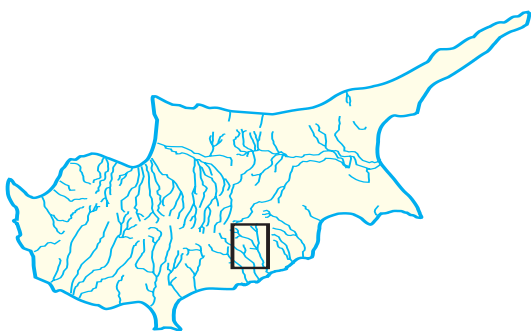
# Choirokoitia Dam

205.000 m<sup>3</sup>



|                    |              |                    |                      |             |                      |
|--------------------|--------------|--------------------|----------------------|-------------|----------------------|
| Category:          | large dam    | Purpose:           | irrigation           | Embankment: |                      |
| River:             | Off - stream | Reservoir surface: | 31.000m <sup>2</sup> | Height:     | 16m                  |
| Year of Operation: | 1984         | Water-Shed         |                      | Length:     | -                    |
| Type:              | earthfill    | Diversion Wier:    | -                    | Volume:     | 95.000m <sup>3</sup> |
|                    |              |                    |                      | Spillway:   |                      |
|                    |              |                    |                      | Length:     | -                    |
|                    |              |                    |                      | Capacity:   | -                    |

Designed by: *Water Development Department* Constructed by: *Iacovou Bros*



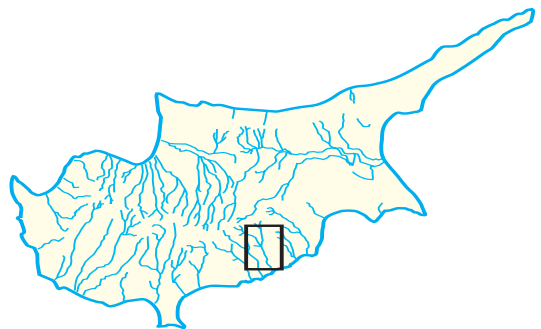
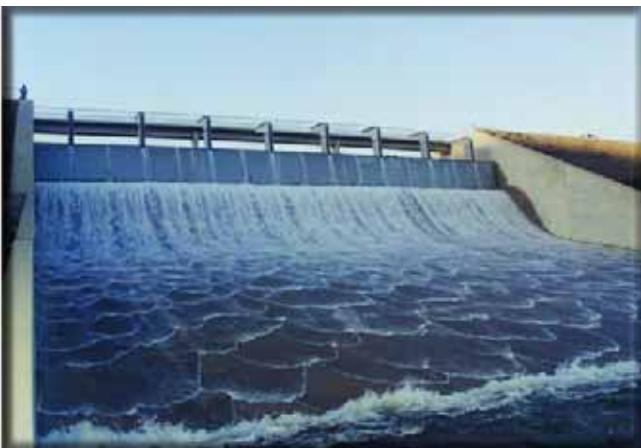
# Dipotamos Dam

15.500.000 m<sup>3</sup>



|                    |               |                    |                         |             |                         |
|--------------------|---------------|--------------------|-------------------------|-------------|-------------------------|
| Category:          | large dam     | Purpose:           | domestic, irrigation    | Embankment: |                         |
| River:             | Pentaschoinos | Reservoir surface: | 1.000.000m <sup>2</sup> | Height:     | 60m                     |
| Year of Operation: | 1985          | Water-Shed:        | 79,00km <sup>2</sup>    | Length:     | 390m                    |
| Type:              | rockfill      |                    |                         | Volume:     | 1.090.000m <sup>3</sup> |
|                    |               |                    |                         | Spillway:   |                         |
|                    |               |                    |                         | Length:     | 62m                     |
|                    |               |                    |                         | Capacity:   | 1.130m <sup>3</sup> /s  |

Designed by: *Rofe Kennard & Lapworth in association with Chr. Ioannides*  
Constructed by: *Shephard Hill - G.P. Zachariades Joint Venture*





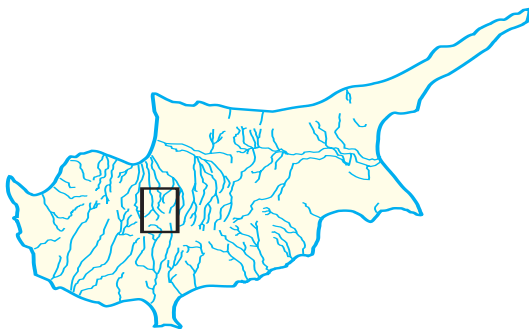
# Esso Galata Dam

35.000 m<sup>3</sup>



|                    |              |                    |                     |             |     |
|--------------------|--------------|--------------------|---------------------|-------------|-----|
| Category:          | small dam    | Purpose:           | irrigation          | Embankment: |     |
| River:             | Off - stream | Reservoir surface: | 8.000m <sup>2</sup> | Height:     | 27m |
| Year of Operation: | 1985         | Water-Shed         |                     | Length:     | -   |
| Type:              | earthfill    | Diversion Wier:    | -                   | Volume:     | -   |
|                    |              |                    |                     | Spillway:   |     |
|                    |              |                    |                     | Length:     | -   |
|                    |              |                    |                     | Capacity:   | -   |

Designed by: *Water Development Department* Constructed by: *Water Development Department*



# Kalavasos Dam

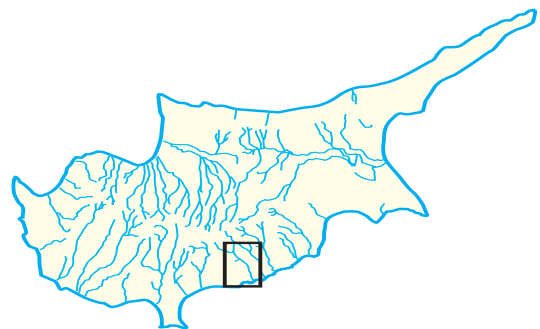
17.100.000 m<sup>3</sup>



|                    |           |                    |                       |             |                         |
|--------------------|-----------|--------------------|-----------------------|-------------|-------------------------|
| Category:          | large dam | Purpose:           | irrigation            | Embankment: |                         |
| River:             | Vasilikos | Reservoir surface: | 875.000m <sup>2</sup> | Height:     | 60m                     |
| Year of Operation: | 1985      | Water-Shed:        | 95,50km <sup>2</sup>  | Length:     | 482m                    |
| Type:              | rockfill  |                    |                       | Volume:     | 1.700.000m <sup>3</sup> |
|                    |           |                    |                       | Spillway:   |                         |
|                    |           |                    |                       | Length:     | 69m                     |
|                    |           |                    |                       | Capacity:   | 1.268m <sup>3</sup> /s  |

Designed by: *Rofe Kennard & Lapworth in association with Chr. Ioannides*

Constructed by: *J&P - Medcon*



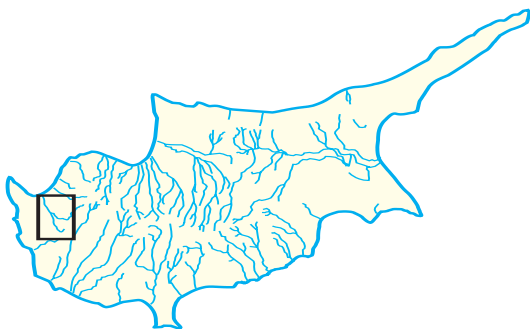
# Evretou Dam

24.000.000 m<sup>3</sup>



|                    |                    |                    |                         |             |                         |
|--------------------|--------------------|--------------------|-------------------------|-------------|-------------------------|
| Category:          | large dam          | Purpose:           | irrigation              | Embankment: |                         |
| River:             | Stavros tis Psokas | Reservoir surface: | 1.250.000m <sup>2</sup> | Height:     | 70m                     |
| Year of Operation: | 1986               | Water-Shed:        | 91,00km <sup>2</sup>    | Length:     | 260m                    |
| Type:              | rockfill           |                    |                         | Volume:     | 1.400.000m <sup>3</sup> |
|                    |                    |                    |                         | Spillway:   |                         |
|                    |                    |                    |                         | Length:     | 182m                    |
|                    |                    |                    |                         | Capacity:   | 360m <sup>3</sup> /s    |

Designed by: *Sir William Halcrow and Partners* Constructed by: *Shephard Hill - Zachariades Joint Venture*



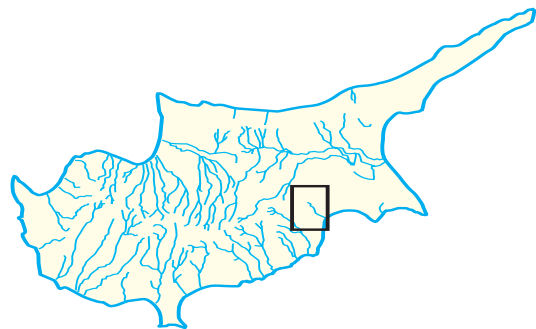
# Aradippou Dam

90.000 m<sup>3</sup>



|                    |             |                    |          |             |     |
|--------------------|-------------|--------------------|----------|-------------|-----|
| Category:          | small dam   | Purpose:           | recharge | Embankment: |     |
| River:             | Partenities | Reservoir surface: | -        | Height:     | 14m |
| Year of Operation: | 1987        | Water-Shed:        | -        | Length:     | -   |
| Type:              | gravity     |                    |          | Volume:     | -   |
|                    |             |                    |          | Spillway:   |     |
|                    |             |                    |          | Length:     | -   |
|                    |             |                    |          | Capacity:   | -   |

Designed by: *Water Development Department* Constructed by: *Water Development Department*



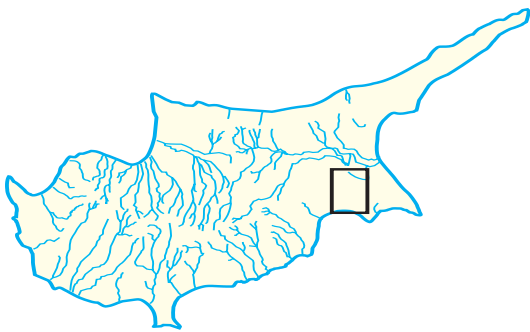
# Achna Dam

6.800.000 m<sup>3</sup>



|                    |              |                    |                         |             |                       |
|--------------------|--------------|--------------------|-------------------------|-------------|-----------------------|
| Category:          | large dam    | Purpose:           | recharge                | Embankment: |                       |
| River:             | Off - stream | Reservoir surface: | 1.250.000m <sup>2</sup> | Height:     | 16m                   |
| Year of Operation: | 1987         | Water-Shed:        | -                       | Length:     | 272m                  |
| Type:              | earthfill    |                    |                         | Volume:     | 220.000m <sup>3</sup> |
|                    |              |                    |                         | Spillway:   |                       |
|                    |              |                    |                         | Length:     | -                     |
|                    |              |                    |                         | Capacity:   | 35m <sup>3</sup> /s   |

Designed by: *Sir William Halcrow* Constructed by: *Iacovou Bros*



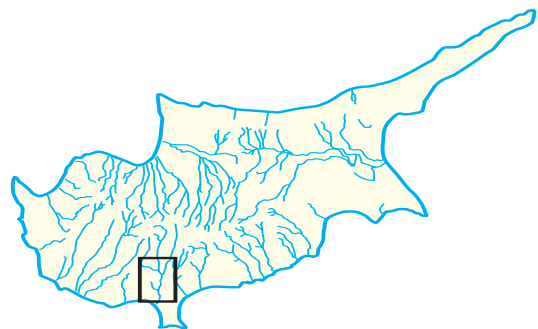
# Kouris Dam

115.000.000 m<sup>3</sup>



|                    |           |                    |                                |             |                         |
|--------------------|-----------|--------------------|--------------------------------|-------------|-------------------------|
| Category:          | large dam | Purpose:           | domestic, irrigation, recharge | Embankment: |                         |
| River:             | Kouris    | Reservoir surface: | 3.600.000m <sup>2</sup>        | Height:     | 110m                    |
| Year of Operation: | 1988      | Water-Shed:        | 308,00km <sup>2</sup>          | Length:     | 550m                    |
| Type:              | earthfill |                    |                                | Volume:     | 9.400.000m <sup>3</sup> |
|                    |           |                    |                                | Spillway:   |                         |
|                    |           |                    |                                | Length:     | 408m                    |
|                    |           |                    |                                | Capacity:   | 1.928m <sup>3</sup> /s  |

Designed by: *Sogreah and Hydroconsult* Constructed by: *Impregilo J&P*



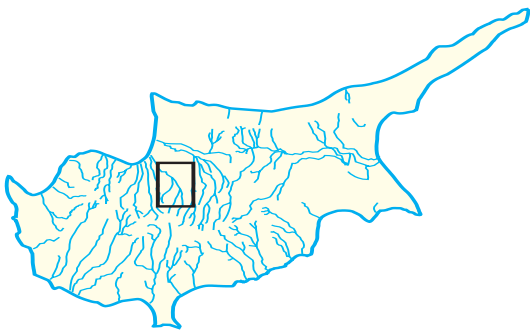
# Vyzakia Dam

1.690.000 m<sup>3</sup>



|                    |              |                    |                       |             |                       |
|--------------------|--------------|--------------------|-----------------------|-------------|-----------------------|
| Category:          | large dam    | Purpose:           | domestic, irrigation  | Embankment: |                       |
| River:             | Off - stream | Reservoir surface: | 160.000m <sup>2</sup> | Height:     | 37m                   |
| Year of Operation: | 1994         | Water-Shed:        | 350,00km <sup>2</sup> | Length:     | 394m                  |
| Type:              | earthfill    |                    |                       | Volume:     | 366.000m <sup>3</sup> |
|                    |              |                    |                       | Spillway:   |                       |
|                    |              |                    |                       | Length:     | 22m                   |
|                    |              |                    |                       | Capacity:   | 30m <sup>3</sup> /s   |

Designed by: *Water Development Department* Constructed by: *Cybarco Ltd*



## Melini No 2 Dam

97.000 m<sup>3</sup>



Category: large dam

River: Off - stream

Year of Operation: 1996

Type: earthfill

Purpose: irrigation

Reservoir surface: 14.000m<sup>2</sup>

Water-Shed  
Diversion Wier: -

Embankment:

Height: 36m

Length: -

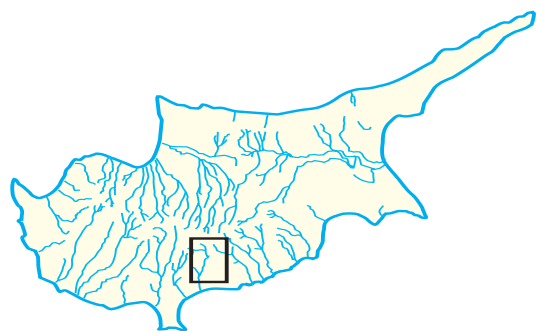
Volume: 97.000m<sup>3</sup>

Spillway:

Length: -

Capacity: -

Designed by: *Water Development Department* Constructed by: *Charalambous Bros Ltd*





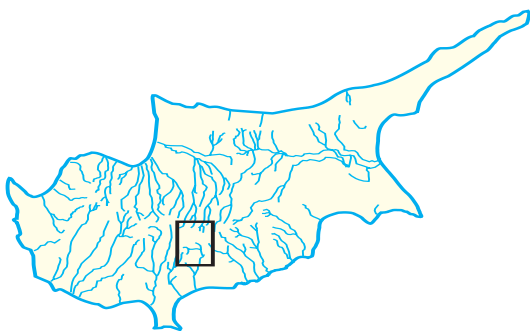
# Odou No 1 Dam

32.000 m<sup>3</sup>



|                    |              |                               |                     |             |                      |
|--------------------|--------------|-------------------------------|---------------------|-------------|----------------------|
| Category:          | large dam    | Purpose:                      | irrigation          | Embankment: |                      |
| River:             | Off - stream | Reservoir surface:            | 9.000m <sup>2</sup> | Height:     | 33m                  |
| Year of Operation: | 1996         | Water-Shed<br>Diversion Wier: | 2,9km <sup>2</sup>  | Length:     | -                    |
| Type:              | earthfill    |                               |                     | Volume:     | 46.000m <sup>3</sup> |
|                    |              |                               |                     | Spillway:   |                      |
|                    |              |                               |                     | Length:     | -                    |
|                    |              |                               |                     | Capacity:   | -                    |

Designed by: *Water Development Department* Constructed by: *Charalambous Bros Ltd*



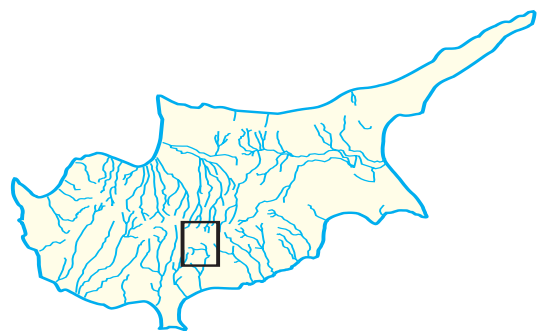
# Odou No 2 Dam

53.000 m<sup>3</sup>



|                    |              |                               |                      |             |                      |
|--------------------|--------------|-------------------------------|----------------------|-------------|----------------------|
| Category:          | large dam    | Purpose:                      | irrigation           | Embankment: |                      |
| River:             | Off - stream | Reservoir surface:            | 13.000m <sup>2</sup> | Height:     | 34m                  |
| Year of Operation: | 1996         | Water-Shed<br>Diversion Wier: | 2,9km <sup>2</sup>   | Length:     | -                    |
| Type:              | earthfill    |                               |                      | Volume:     | 30.000m <sup>3</sup> |
|                    |              |                               |                      | Spillway:   |                      |
|                    |              |                               |                      | Length:     | -                    |
|                    |              |                               |                      | Capacity:   | -                    |

Designed by: *Water Development Department* Constructed by: *Charalambous Bros Ltd*



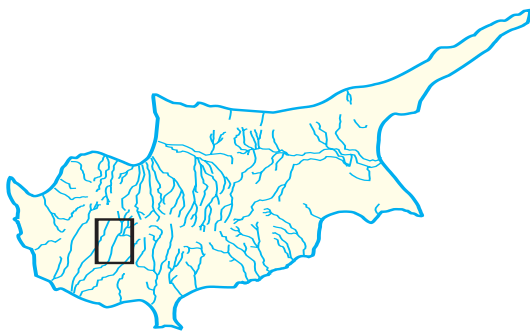
# Arminou Dam

4.300.000 m<sup>3</sup>



|                    |                |                    |                       |             |                        |
|--------------------|----------------|--------------------|-----------------------|-------------|------------------------|
| Category:          | large dam      | Purpose:           | irrigation, recharge  | Embankment: |                        |
| River:             | Diarizos       | Reservoir surface: | 353.000m <sup>2</sup> | Height:     | 45m                    |
| Year of Operation: | 1998           | Water-Shed:        | 116,00km <sup>2</sup> | Length:     | 208m                   |
| Type:              | earth/rockfill |                    |                       | Volume:     | 430.000m <sup>3</sup>  |
|                    |                |                    |                       | Spillway:   |                        |
|                    |                |                    |                       | Length:     | 80m                    |
|                    |                |                    |                       | Capacity:   | 2.450m <sup>3</sup> /s |

Designed by: *Howard Humphreys & Sons England* Constructed by: *G.P. Zachariades Ltd*



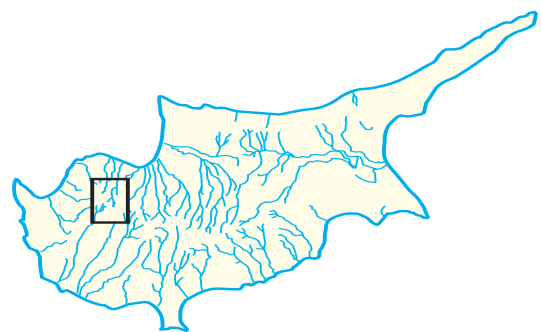
# Tsakistra Dam

100.000 m<sup>3</sup>



|                    |           |                    |                      |             |                      |
|--------------------|-----------|--------------------|----------------------|-------------|----------------------|
| Category:          | large dam | Purpose:           | irrigation           | Embankment: |                      |
| River:             | Limnitis  | Reservoir surface: | 15.000m <sup>2</sup> | Height:     | 23m                  |
| Year of Operation: | 2000      | Water-Shed:        | 10,70km <sup>2</sup> | Length:     | 79m                  |
| Type:              | gravity   |                    |                      | Volume:     | 9.000m <sup>3</sup>  |
|                    |           |                    |                      | Spillway:   |                      |
|                    |           |                    |                      | Length:     | 25m                  |
|                    |           |                    |                      | Capacity:   | 400m <sup>3</sup> /s |

Designed by: *Water Development Department* Constructed by: *G.P. Zachariades Ltd*



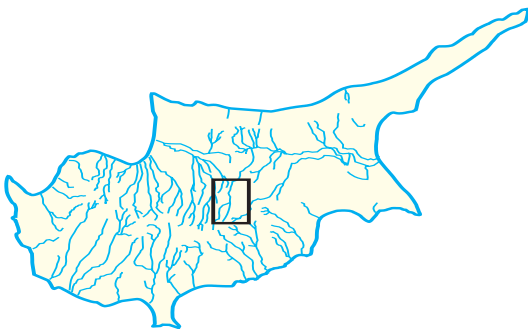
# Tamassos Dam

2.800.000 m<sup>3</sup>



|                    |                |                    |                       |             |                       |
|--------------------|----------------|--------------------|-----------------------|-------------|-----------------------|
| Category:          | large dam      | Purpose:           | recharge              | Embankment: |                       |
| River:             | Pediaios       | Reservoir surface: | 305.000m <sup>2</sup> | Height:     | 33m                   |
| Year of Operation: | 2002           | Water-Shed:        | 45,00km <sup>2</sup>  | Length:     | 200m                  |
| Type:              | earth/rockfill |                    |                       | Volume:     | 260.000m <sup>3</sup> |
|                    |                |                    |                       | Spillway:   |                       |
|                    |                |                    |                       | Length:     | 68m                   |
|                    |                |                    |                       | Capacity:   | 800m <sup>3</sup> /s  |

Designed by: *Mott MacDonald* Constructed by: *Char. Apostolides Ltd and Co.*



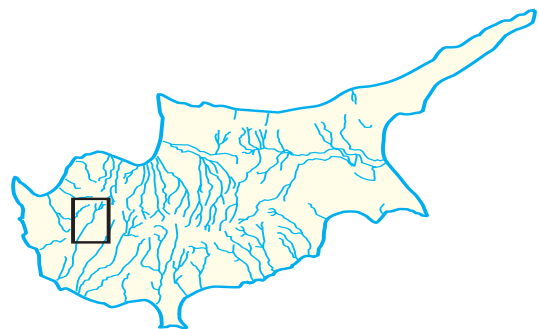
# Kannaviou Dam

18.000.000 m<sup>3</sup>



|                    |                |                    |                       |             |                         |
|--------------------|----------------|--------------------|-----------------------|-------------|-------------------------|
| Category:          | large dam      | Purpose:           | domestic, irrigation  | Embankment: |                         |
| River:             | Ezousa         | Reservoir surface: | 926.000m <sup>2</sup> | Height:     | 75m                     |
| Year of Operation: | 2004           | Water-Shed:        | 56,00km <sup>2</sup>  | Length:     | 650m                    |
| Type:              | earth/rockfill |                    |                       | Volume:     | 1.900.000m <sup>3</sup> |
|                    |                |                    |                       | Spillway:   |                         |
|                    |                |                    |                       | Length:     | 119m                    |
|                    |                |                    |                       | Capacity:   | 780m <sup>3</sup> /s    |

Designed by: *Howard Humphreys & partners with J. Theophilou*  
Constructed by: *AEGEC-Iacovou Bros-Cybarco*



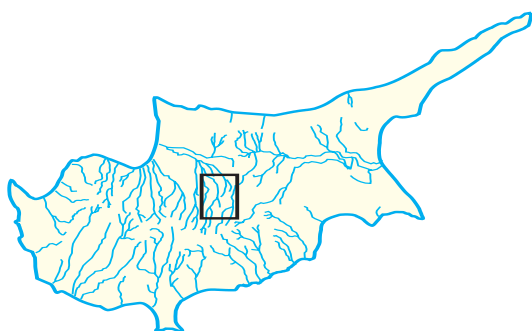
# Klirou-Malounta-Akaki Dam

2.000.000 m<sup>3</sup>



|                    |                   |                    |                       |             |                        |
|--------------------|-------------------|--------------------|-----------------------|-------------|------------------------|
| Category:          | large dam         | Purpose:           | irrigation, recharge  | Embankment: |                        |
| River:             | Akaki (Serrachis) | Reservoir surface: | 180.000m <sup>2</sup> | Height:     | 38m                    |
| Year of Operation: | 2007              | Water-Shed:        | 84,00km <sup>2</sup>  | Length:     | 265m                   |
| Type:              | earth/rockfill    |                    |                       | Volume:     | 215.000m <sup>3</sup>  |
|                    |                   |                    |                       | Spillway:   |                        |
|                    |                   |                    |                       | Length:     | 59m                    |
|                    |                   |                    |                       | Capacity:   | 1.200m <sup>3</sup> /s |

Designed by: *Water Development Department* Constructed by: *CYBARCO Plc*



**Small dams of Cyprus  
without photographs**



## Gypsou Dam

100.000 m<sup>3</sup>

|                    |           |                    |          |             |    |
|--------------------|-----------|--------------------|----------|-------------|----|
| Category:          | small dam | Purpose:           | recharge | Embankment: |    |
| River:             | -         | Reservoir surface: | -        | Height:     | 3m |
| Year of Operation: | 1955      | Water-Shed:        | -        | Length:     | -  |
| Type:              | earthfill |                    |          | Volume:     | -  |
|                    |           |                    |          | Spillway:   |    |
|                    |           |                    |          | Length:     | -  |
|                    |           |                    |          | Capacity:   | -  |

Designed by: *Water Development Department* Constructed by: *Water Development Department*

## Sotira Dam

45.000 m<sup>3</sup>

|                    |           |                    |          |             |    |
|--------------------|-----------|--------------------|----------|-------------|----|
| Category:          | small dam | Purpose:           | recharge | Embankment: |    |
| River:             | -         | Reservoir surface: | -        | Height:     | 8m |
| Year of Operation: | 1962      | Water-Shed:        | -        | Length:     | -  |
| Type:              | earthfill |                    |          | Volume:     | -  |
|                    |           |                    |          | Spillway:   |    |
|                    |           |                    |          | Length:     | -  |
|                    |           |                    |          | Capacity:   | -  |

Designed by: *Water Development Department* Constructed by: *Water Development Department*

50.000 m<sup>3</sup>

|                    |           |                    |          |             |    |
|--------------------|-----------|--------------------|----------|-------------|----|
| Category:          | small dam | Purpose:           | recharge | Embankment: |    |
| River:             | -         | Reservoir surface: | -        | Height:     | 5m |
| Year of Operation: | 1963      | Water-Shed:        | -        | Length:     | -  |
| Type:              | earthfill |                    |          | Volume:     | -  |
|                    |           |                    |          | Spillway:   |    |
|                    |           |                    |          | Length:     | -  |
|                    |           |                    |          | Capacity:   | -  |

Designed by: *Water Development Department* Constructed by: *Water Development Department*

## Famagusta Recharge Dam

165.000 m<sup>3</sup>

|                    |           |                    |          |             |    |
|--------------------|-----------|--------------------|----------|-------------|----|
| Category:          | small dam | Purpose:           | recharge | Embankment: |    |
| River:             | -         | Reservoir surface: | -        | Height:     | 8m |
| Year of Operation: | 1963      | Water-Shed:        | -        | Length:     | -  |
| Type:              | earthfill |                    |          | Volume:     | -  |
|                    |           |                    |          | Spillway:   |    |
|                    |           |                    |          | Length:     | -  |
|                    |           |                    |          | Capacity:   | -  |

Designed by: *Water Development Department* Constructed by: *Water Development Department*

## Paralimni Dam

115.000 m<sup>3</sup>

|                    |           |                    |          |             |    |
|--------------------|-----------|--------------------|----------|-------------|----|
| Category:          | small dam | Purpose:           | recharge | Embankment: |    |
| River:             | -         | Reservoir surface: | -        | Height:     | 5m |
| Year of Operation: | 1963      | Water-Shed:        | -        | Length:     | -  |
| Type:              | earthfill |                    |          | Volume:     | -  |
|                    |           |                    |          | Spillway:   |    |
|                    |           |                    |          | Length:     | -  |
|                    |           |                    |          | Capacity:   | -  |

Designed by: *Water Development Department* Constructed by: *Water Development Department*

1.365.000 m<sup>3</sup>

|                    |           |                    |          |             |    |
|--------------------|-----------|--------------------|----------|-------------|----|
| Category:          | small dam | Purpose:           | recharge | Embankment: |    |
| River:             | -         | Reservoir surface: | -        | Height:     | 2m |
| Year of Operation: | 1964      | Water-Shed:        | -        | Length:     | -  |
| Type:              | earthfill |                    |          | Volume:     | -  |
|                    |           |                    |          | Spillway:   |    |
|                    |           |                    |          | Length:     | -  |
|                    |           |                    |          | Capacity:   | -  |

Designed by: *Water Development Department* Constructed by: *Water Development Department*

## Deryneia Dam

23.000 m<sup>3</sup>

|                    |           |                    |          |             |    |
|--------------------|-----------|--------------------|----------|-------------|----|
| Category:          | small dam | Purpose:           | recharge | Embankment: |    |
| River:             | -         | Reservoir surface: | -        | Height:     | 6m |
| Year of Operation: | 1964      | Water-Shed:        | -        | Length:     | -  |
| Type:              | earthfill |                    |          | Volume:     | -  |
|                    |           |                    |          | Spillway:   |    |
|                    |           |                    |          | Length:     | -  |
|                    |           |                    |          | Capacity:   | -  |

Designed by: *Water Development Department* Constructed by: *Water Development Department*

## Agios Loukas Lake Dam

4.545.000 m<sup>3</sup>

|                    |           |                    |          |             |    |
|--------------------|-----------|--------------------|----------|-------------|----|
| Category:          | small dam | Purpose:           | recharge | Embankment: |    |
| River:             | -         | Reservoir surface: | -        | Height:     | 3m |
| Year of Operation: | 1964      | Water-Shed:        | -        | Length:     | -  |
| Type:              | earthfill |                    |          | Volume:     | -  |
|                    |           |                    |          | Spillway:   |    |
|                    |           |                    |          | Length:     | -  |
|                    |           |                    |          | Capacity:   | -  |

Designed by: *Water Development Department* Constructed by: *Water Development Department*

115.000 m<sup>3</sup>

|                    |           |                    |          |             |    |
|--------------------|-----------|--------------------|----------|-------------|----|
| Category:          | small dam | Purpose:           | recharge | Embankment: |    |
| River:             | -         | Reservoir surface: | -        | Height:     | 5m |
| Year of Operation: | 1964      | Water-Shed:        | -        | Length:     | -  |
| Type:              | earthfill |                    |          | Volume:     | -  |
|                    |           |                    |          | Spillway:   |    |
|                    |           |                    |          | Length:     | -  |
|                    |           |                    |          | Capacity:   | -  |

Designed by: *Water Development Department* Constructed by: *Water Development Department*

## Avgorou Dam

68.000 m<sup>3</sup>

|                    |           |                    |          |             |    |
|--------------------|-----------|--------------------|----------|-------------|----|
| Category:          | small dam | Purpose:           | recharge | Embankment: |    |
| River:             | -         | Reservoir surface: | -        | Height:     | 3m |
| Year of Operation: | 1966      | Water-Shed:        | -        | Length:     | -  |
| Type:              | earthfill |                    |          | Volume:     | -  |
|                    |           |                    |          | Spillway:   |    |
|                    |           |                    |          | Length:     | -  |
|                    |           |                    |          | Capacity:   | -  |

Designed by: *Water Development Department* Constructed by: *Water Development Department*

## Kontea Dam

82.000 m<sup>3</sup>

|                    |           |                    |          |             |    |
|--------------------|-----------|--------------------|----------|-------------|----|
| Category:          | small dam | Purpose:           | recharge | Embankment: |    |
| River:             | -         | Reservoir surface: | -        | Height:     | 5m |
| Year of Operation: | 1966      | Water-Shed:        | -        | Length:     | -  |
| Type:              | earthfill |                    |          | Volume:     | -  |
|                    |           |                    |          | Spillway:   |    |
|                    |           |                    |          | Length:     | -  |
|                    |           |                    |          | Capacity:   | -  |

Designed by: *Water Development Department* Constructed by: *Water Development Department*

86.000 m<sup>3</sup>

|                    |           |                    |          |             |    |
|--------------------|-----------|--------------------|----------|-------------|----|
| Category:          | small dam | Purpose:           | recharge | Embankment: |    |
| River:             | -         | Reservoir surface: | -        | Height:     | 7m |
| Year of Operation: | 1966      | Water-Shed:        | -        | Length:     | -  |
| Type:              | earthfill |                    |          | Volume:     | -  |
|                    |           |                    |          | Spillway:   |    |
|                    |           |                    |          | Length:     | -  |
|                    |           |                    |          | Capacity:   | -  |

Designed by: *Water Development Department* Constructed by: *Water Development Department*

## Sotira Dam

32.000 m<sup>3</sup>

|                    |           |                    |          |             |    |
|--------------------|-----------|--------------------|----------|-------------|----|
| Category:          | small dam | Purpose:           | recharge | Embankment: |    |
| River:             | -         | Reservoir surface: | -        | Height:     | 5m |
| Year of Operation: | 1966      | Water-Shed:        | -        | Length:     | -  |
| Type:              | earthfill |                    |          | Volume:     | -  |
|                    |           |                    |          | Spillway:   |    |
|                    |           |                    |          | Length:     | -  |
|                    |           |                    |          | Capacity:   | -  |

Designed by: *Water Development Department* Constructed by: *Water Development Department*

## Frenaros Dam

45.000 m<sup>3</sup>

|                    |           |                    |          |             |    |
|--------------------|-----------|--------------------|----------|-------------|----|
| Category:          | small dam | Purpose:           | recharge | Embankment: |    |
| River:             | -         | Reservoir surface: | -        | Height:     | 7m |
| Year of Operation: | 1966      | Water-Shed:        | -        | Length:     | -  |
| Type:              | earthfill |                    |          | Volume:     | -  |
|                    |           |                    |          | Spillway:   |    |
|                    |           |                    |          | Length:     | -  |
|                    |           |                    |          | Capacity:   | -  |

Designed by: *Water Development Department* Constructed by: *Water Development Department*

68.000 m<sup>3</sup>

|                    |           |                    |          |             |    |
|--------------------|-----------|--------------------|----------|-------------|----|
| Category:          | small dam | Purpose:           | recharge | Embankment: |    |
| River:             | -         | Reservoir surface: | -        | Height:     | 3m |
| Year of Operation: | 1967      | Water-Shed:        | -        | Length:     | -  |
| Type:              | earthfill |                    |          | Volume:     | -  |
|                    |           |                    |          | Spillway:   |    |
|                    |           |                    |          | Length:     | -  |
|                    |           |                    |          | Capacity:   | -  |

Designed by: *Water Development Department* Constructed by: *Water Development Department*

## Achna Mesania Dam

90.000 m<sup>3</sup>

|                    |           |                    |          |             |    |
|--------------------|-----------|--------------------|----------|-------------|----|
| Category:          | small dam | Purpose:           | recharge | Embankment: |    |
| River:             | -         | Reservoir surface: | -        | Height:     | 4m |
| Year of Operation: | 1967      | Water-Shed:        | -        | Length:     | -  |
| Type:              | earthfill |                    |          | Volume:     | -  |
|                    |           |                    |          | Spillway:   |    |
|                    |           |                    |          | Length:     | -  |
|                    |           |                    |          | Capacity:   | -  |

Designed by: *Water Development Department* Constructed by: *Water Development Department*

## Lysi Dam

77.000 m<sup>3</sup>

|                    |           |                    |          |             |    |
|--------------------|-----------|--------------------|----------|-------------|----|
| Category:          | small dam | Purpose:           | recharge | Embankment: |    |
| River:             | -         | Reservoir surface: | -        | Height:     | 7m |
| Year of Operation: | 1967      | Water-Shed:        | -        | Length:     | -  |
| Type:              | earthfill |                    |          | Volume:     | -  |
|                    |           |                    |          | Spillway:   |    |
|                    |           |                    |          | Length:     | -  |
|                    |           |                    |          | Capacity:   | -  |

Designed by: *Water Development Department* Constructed by: *Water Development Department*

100.000 m<sup>3</sup>

|                    |           |                    |          |             |    |
|--------------------|-----------|--------------------|----------|-------------|----|
| Category:          | small dam | Purpose:           | recharge | Embankment: |    |
| River:             | -         | Reservoir surface: | -        | Height:     | 5m |
| Year of Operation: | 1968      | Water-Shed:        | -        | Length:     | -  |
| Type:              | earthfill |                    |          | Volume:     | -  |
|                    |           |                    |          | Spillway:   |    |
|                    |           |                    |          | Length:     | -  |
|                    |           |                    |          | Capacity:   | -  |

Designed by: *Water Development Department* Constructed by: *Water Development Department*

## Vrysoulles Dam

140.000 m<sup>3</sup>

|                    |           |                    |          |             |    |
|--------------------|-----------|--------------------|----------|-------------|----|
| Category:          | small dam | Purpose:           | recharge | Embankment: |    |
| River:             | -         | Reservoir surface: | -        | Height:     | 7m |
| Year of Operation: | 1969      | Water-Shed:        | -        | Length:     | -  |
| Type:              | earthfill |                    |          | Volume:     | -  |
|                    |           |                    |          | Spillway:   |    |
|                    |           |                    |          | Length:     | -  |
|                    |           |                    |          | Capacity:   | -  |

Designed by: *Water Development Department* Constructed by: *Water Development Department*

## Morfou Dam

130.000 m<sup>3</sup>

|                    |           |                    |          |             |    |
|--------------------|-----------|--------------------|----------|-------------|----|
| Category:          | small dam | Purpose:           | recharge | Embankment: |    |
| River:             | -         | Reservoir surface: | -        | Height:     | 5m |
| Year of Operation: | 1969      | Water-Shed:        | -        | Length:     | -  |
| Type:              | earthfill |                    |          | Volume:     | -  |
|                    |           |                    |          | Spillway:   |    |
|                    |           |                    |          | Length:     | -  |
|                    |           |                    |          | Capacity:   | -  |

Designed by: *Water Development Department* Constructed by: *Water Development Department*

50.000 m<sup>3</sup>

|                    |           |                    |          |             |    |
|--------------------|-----------|--------------------|----------|-------------|----|
| Category:          | small dam | Purpose:           | recharge | Embankment: |    |
| River:             | -         | Reservoir surface: | -        | Height:     | 7m |
| Year of Operation: | 1969      | Water-Shed:        | -        | Length:     | -  |
| Type:              | earthfill |                    |          | Volume:     | -  |
|                    |           |                    |          | Spillway:   |    |
|                    |           |                    |          | Length:     | -  |
|                    |           |                    |          | Capacity:   | -  |

Designed by: *Water Development Department* Constructed by: *Water Development Department*

## Protopapas Dam

90.000 m<sup>3</sup>

|                    |           |                    |          |             |    |
|--------------------|-----------|--------------------|----------|-------------|----|
| Category:          | small dam | Purpose:           | recharge | Embankment: |    |
| River:             | -         | Reservoir surface: | -        | Height:     | 6m |
| Year of Operation: | 1970      | Water-Shed:        | -        | Length:     | -  |
| Type:              | earthfill |                    |          | Volume:     | -  |
|                    |           |                    |          | Spillway:   |    |
|                    |           |                    |          | Length:     | -  |
|                    |           |                    |          | Capacity:   | -  |

Designed by: *Water Development Department* Constructed by: *Water Development Department*





P.I.O. 272/2009—2.000 ISBN 978-9963-38-679-6  
Published by the Press and Information Office  
Printed: Printco Ltd